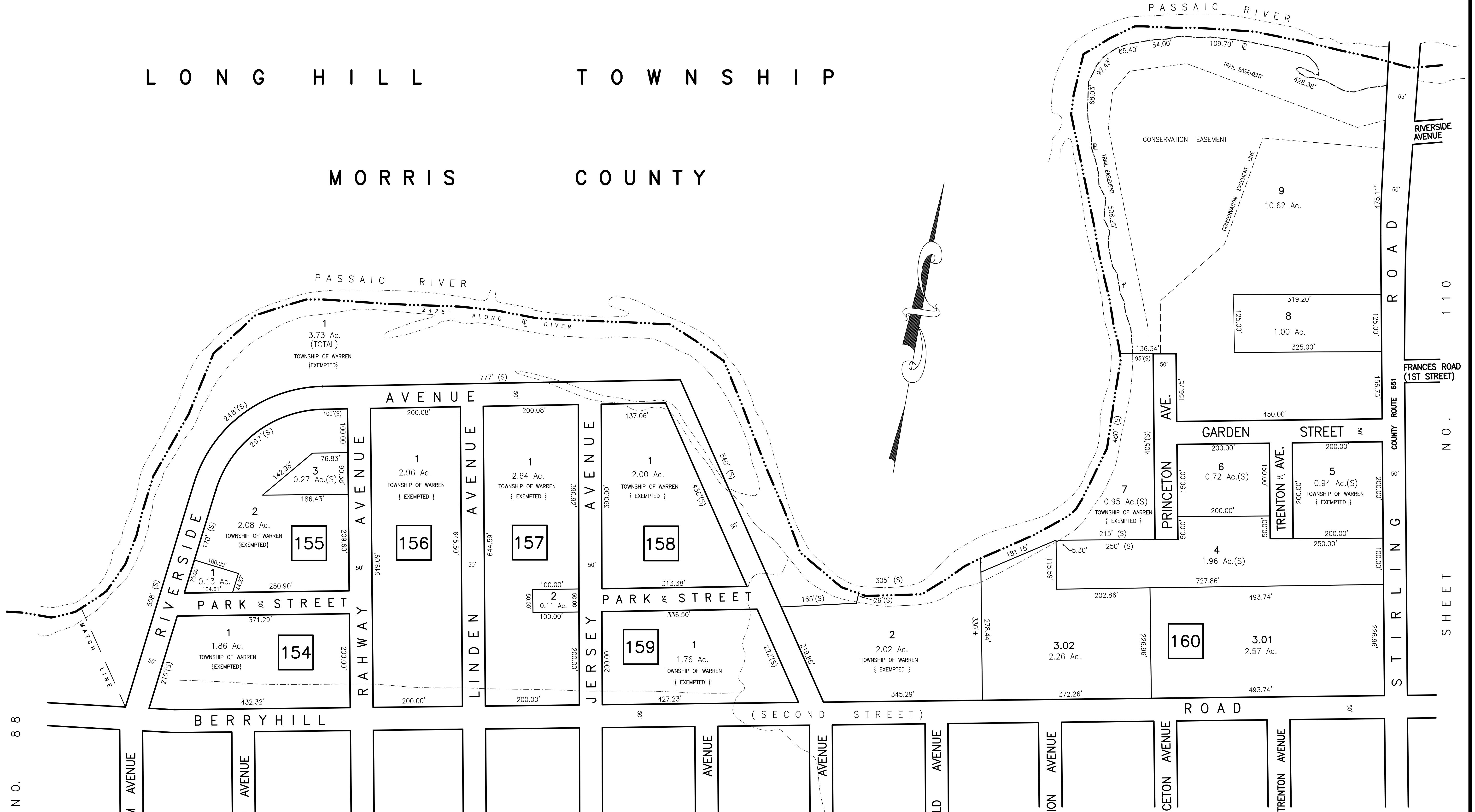


L O N G H I L L T O W N S H I P

M O R R I S C O U N T Y



SHEET N.O. 88

SHEET

N.O.

100

FRANCES ROAD (1ST STREET)
COUNTY ROUTE 651
RIVERSIDE AVENUE
110
S T I R L I N G S H E E T N O .

NEW JERSEY DEPARTMENT OF THE TREASURY
DIVISION OF TAXATION
LOCAL OFFICE - RYBRIDGE
APPROVED AS A TAX MAP PURSUANT TO THE
PROVISIONS OF CHAPTER 175, LAWS OF 1913, ETC.
FOR THE DIRECTOR, DIVISION OF TAXATION

BY *Wm. J. Johnson* P.E. & L.S.
LIC. # 15434 CHIEF ENGINEERING SECTION
DATE MAR 20 1991 SERIAL NO. 718

TAX MAP-99
TOWNSHIP OF WARREN
SOMERSET COUNTY NEW JERSEY
SCALE : 1"=100' DECEMBER, 1989
STEPHEN D. OMBALSKI, PE&LS
112 MAIN STREET
LEBANON, NEW JERSEY 08833