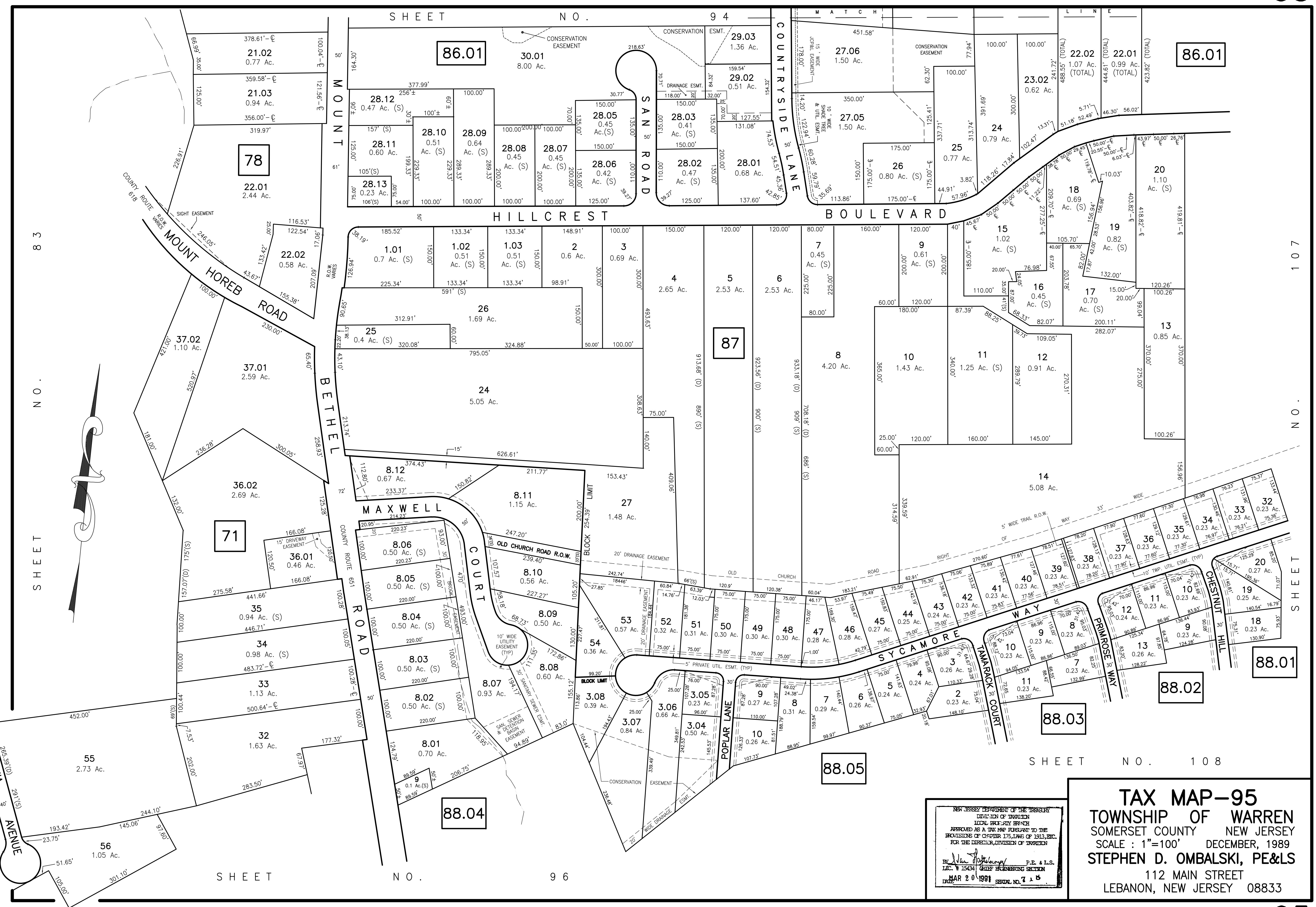
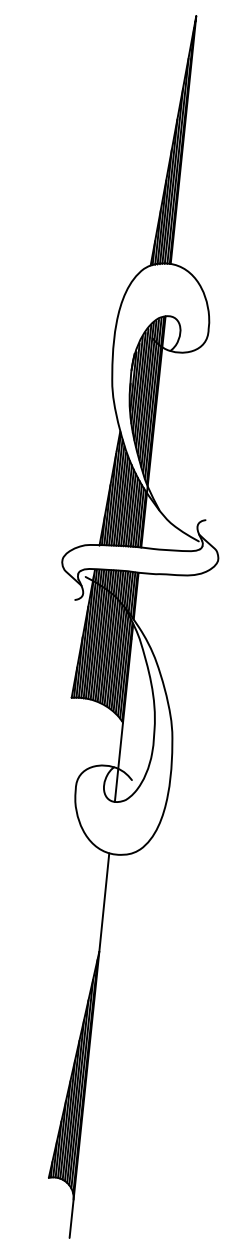


SHEET NO. 94



SHEET NO. 83

SHEET NO. 101



SHEET NO. 96

SHEET NO. 108

NEW JERSEY DEPARTMENT OF THE TREASURY
 DIVISION OF TAXATION
 LOCAL EMPLOYMENT BRANCH
 APPROVED AS A TAX MAP PURSUANT TO THE
 PROVISIONS OF CHAPTER 175, LAWS OF 1913, ETC.
 FOR THE DIRECTOR, DIVISION OF TAXATION

By *John J. [Signature]* P.E. & L.S.
 L.I.C. # 15434 CHIEF ENGINEERING SECTION
 DATE: 2 0 1991 SERIAL NO. 7 1 5

TAX MAP-95
TOWNSHIP OF WARREN
 SOMERSET COUNTY NEW JERSEY
 SCALE: 1"=100' DECEMBER, 1989
STEPHEN D. OMBALSKI, PE&LS
 112 MAIN STREET
 LEBANON, NEW JERSEY 08833