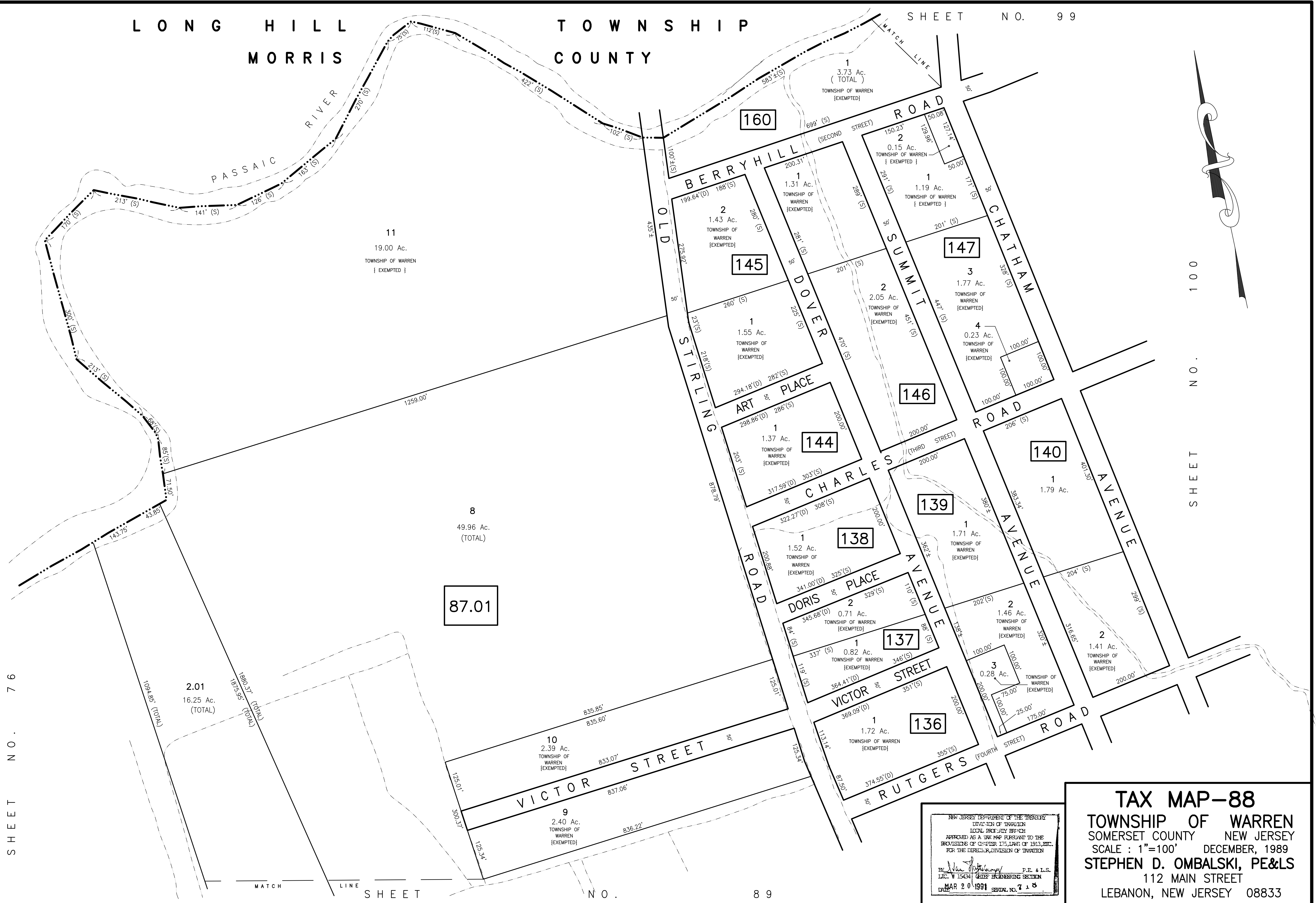


LONG HILL
MORRIS

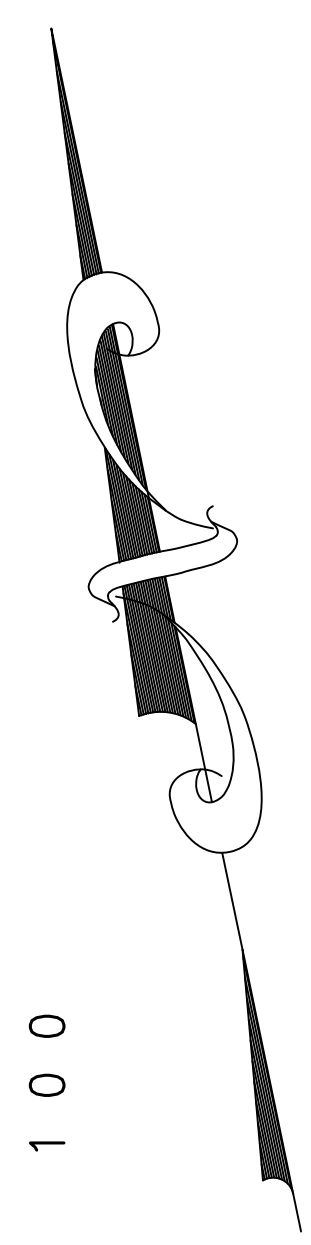
TOWNSHIP
COUNTY

SHEET NO. 99



SHEET NO. 76

SHEET NO. 100



NEW JERSEY DEPARTMENT OF THE TREASURY
 DIVISION OF TAXATION
 LOCAL EXEMPTIONS
 APPROVED AS A TAX MAP PURSUANT TO THE
 PROVISIONS OF CHAPTER 175, LAWS OF 1913, ETC.
 FOR THE DIRECTOR, DIVISION OF TAXATION

By: *Stephen D. Ombalski* P.E. & L.S.
 L.I.C. # 15434 GEOTECHNICAL ENGINEERING SECTION
 DATE: MAR 20 1991 SERIAL NO. 718

TAX MAP-88
 TOWNSHIP OF WARREN
 SOMERSET COUNTY NEW JERSEY
 SCALE: 1"=100' DECEMBER, 1989
STEPHEN D. OMBALSKI, PE&LS
 112 MAIN STREET
 LEBANON, NEW JERSEY 08833