

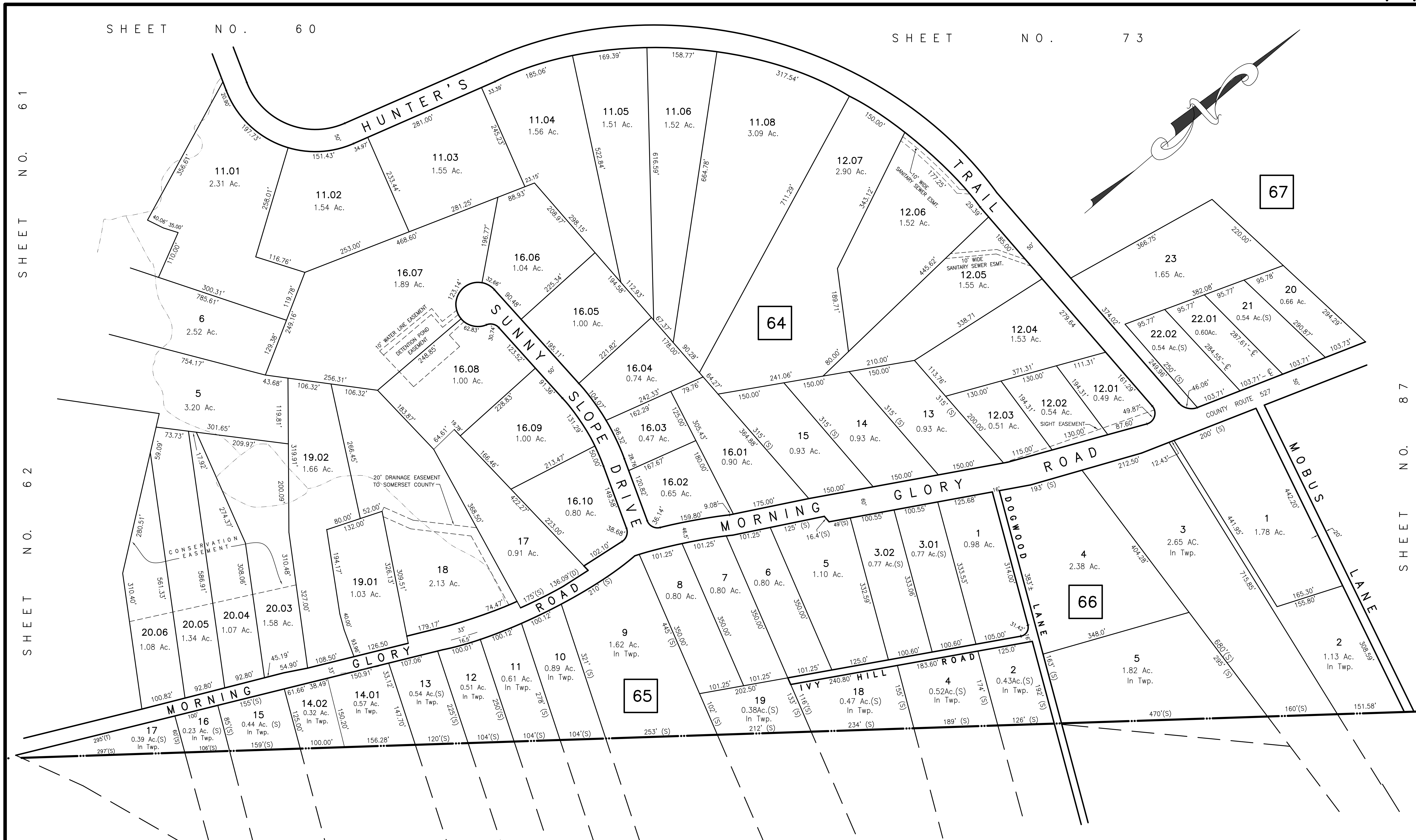
SHEET NO. 60

SHEET NO. 73

SHEET NO. 61

SHEET NO. 62

SHEET NO. 87



GREEN BROOK TOWNSHIP
SOMERSET COUNTY

NEW JERSEY DEPARTMENT OF THE TREASURY
DIVISION OF TAXATION
LOCAL REVENUE BRANCH
APPROVED AS A TAX MAP PURSUANT TO THE
PROVISIONS OF CHAPTER 175, LAWS OF 1913, ETC.
FOR THE DIRECTOR, DIVISION OF TAXATION

BY: *Stephen D. Ombalski* P.E. & L.S.
LIC. # 15434 CHIEF ENGINEERING SECTION

MAR 20 1991 SERIAL NO. 718

TAX MAP-74
TOWNSHIP OF WARREN
SOMERSET COUNTY NEW JERSEY
SCALE: 1"=100' DECEMBER, 1989
STEPHEN D. OMBALSKI, PE&LS
112 MAIN STREET
LEBANON, NEW JERSEY 08833