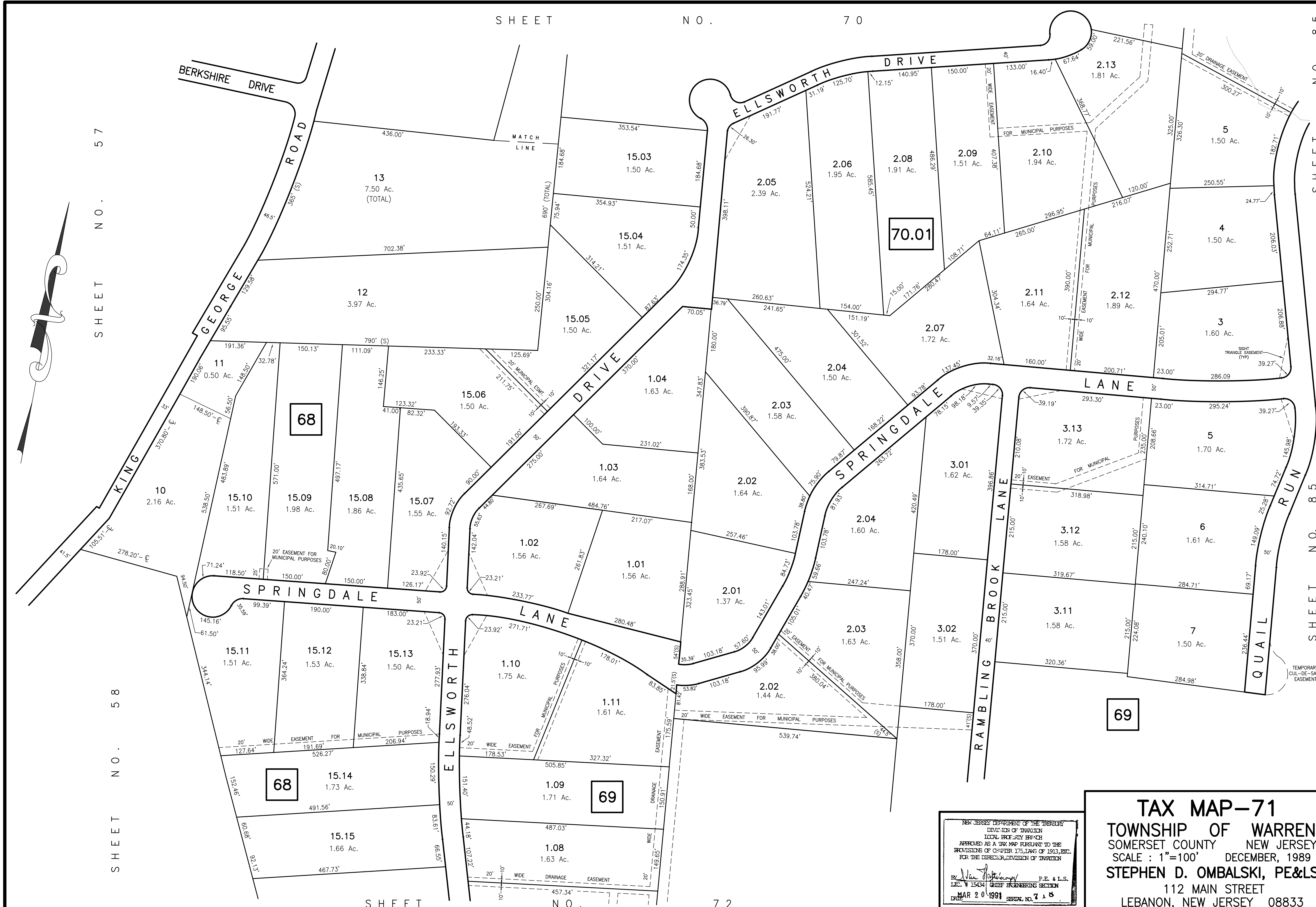


SHEET NO. 57

SHEET NO. 58

SHEET NO.

72



NEW JERSEY DEPARTMENT OF THE TREASURY
 DIVISION OF TAXATION
 LOCAL PROPERTY TAX
 APPROVED AS A TAX MAP PURSUANT TO THE
 PROVISIONS OF CHAPTER 175, LAWS OF 1913, ETC.
 FOR THE DIRECTOR, DIVISION OF TAXATION

BY: *Stephen D. Ombalski* P.E. & L.S.
 L.I.C. # 15434 CHIEF ENGINEERING SECTION
 MAR 20 1991 SERIAL NO. 718

TAX MAP-71
TOWNSHIP OF WARREN
 SOMERSET COUNTY NEW JERSEY
 SCALE : 1"=100' DECEMBER, 1989
STEPHEN D. OMBALSKI, PE&LS
 112 MAIN STREET
 LEBANON, NEW JERSEY 08833