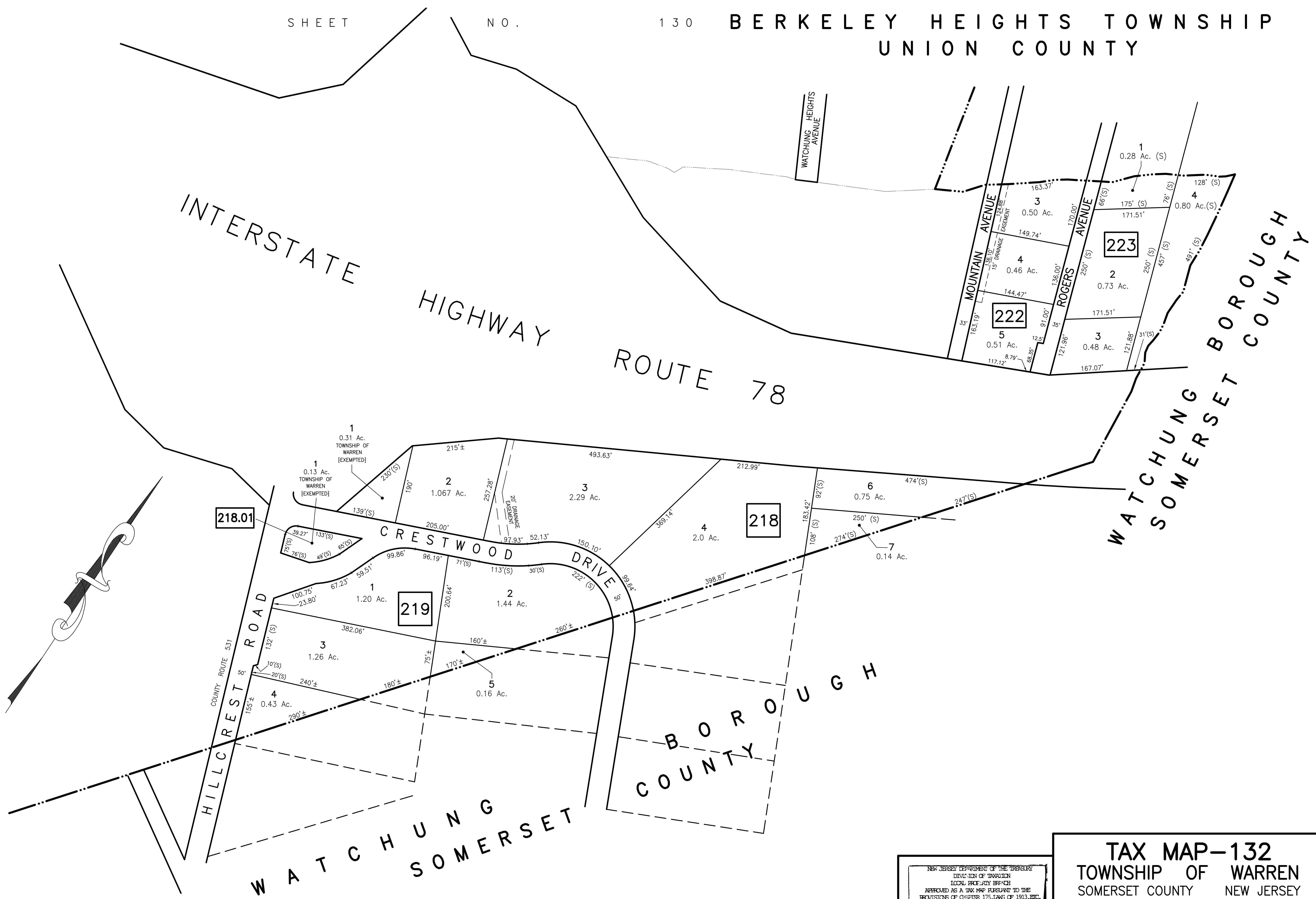


SHEET NO. 130 BERKELEY HEIGHTS TOWNSHIP UNION COUNTY

131

NO.

SHEET



218.01

219

218

223

222

NEW JERSEY DEPARTMENT OF THE TREASURY
 DIVISION OF TAXATION
 LOCAL PROPERTY TAX
 APPROVED AS A TAX MAP PURSUANT TO THE
 PROVISIONS OF CHAPTER 175, LAWS OF 1913, ETC.
 FOR THE DIRECTOR, DIVISION OF TAXATION

By *Stephen D. Ombalski* P.E. & L.S.
 LIC. # 15434 CHIEF ENGINEERING SECTION
 DATE: MAR 20 1991 SERIAL NO. 7 1 5

TAX MAP-132
 TOWNSHIP OF WARREN
 SOMERSET COUNTY NEW JERSEY
 SCALE: 1"=100' DECEMBER, 1989
STEPHEN D. OMBALSKI, PE&LS
 112 MAIN STREET
 LEBANON, NEW JERSEY 08833