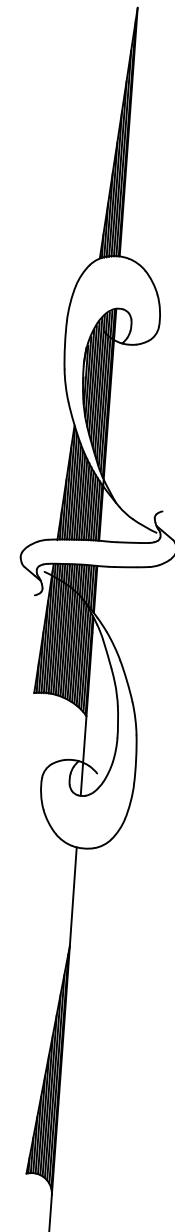


INTERSTATE HIGHWAY ROUTE 78

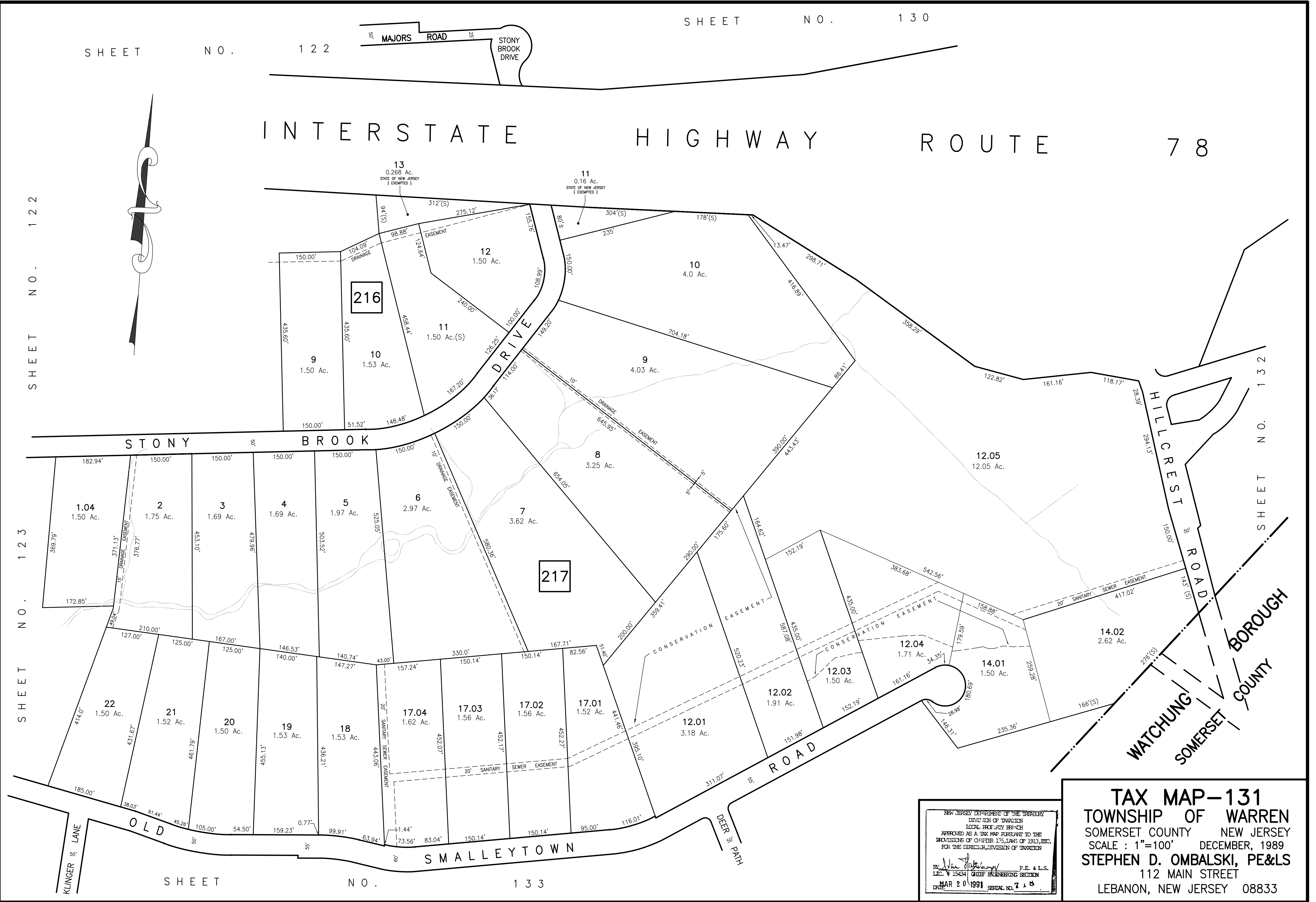


SHEET NO. 122

SHEET NO. 123

SHEET NO. 123

SHEET NO. 132



NEW JERSEY DEPARTMENT OF THE TREASURY  
 DIVISION OF TAXATION  
 LOCAL PROPERTY TAX  
 APPROVED AS A TAX MAP PURSUANT TO THE  
 PROVISIONS OF CHAPTER 175, LAWS OF 1913, ETC.  
 FOR THE DIRECTOR, DIVISION OF TAXATION

By: *Stephen D. Ombalski* P.E. & L.S.  
 LIC. # 15434 CHIEF ENGINEERING SECTION  
 DATE: MAR 20 1991 SERIAL NO. 718

**TAX MAP-131**  
**TOWNSHIP OF WARREN**  
 SOMERSET COUNTY NEW JERSEY  
 SCALE: 1"=100' DECEMBER, 1989  
**STEPHEN D. OMBALSKI, PE&LS**  
 112 MAIN STREET  
 LEBANON, NEW JERSEY 08833