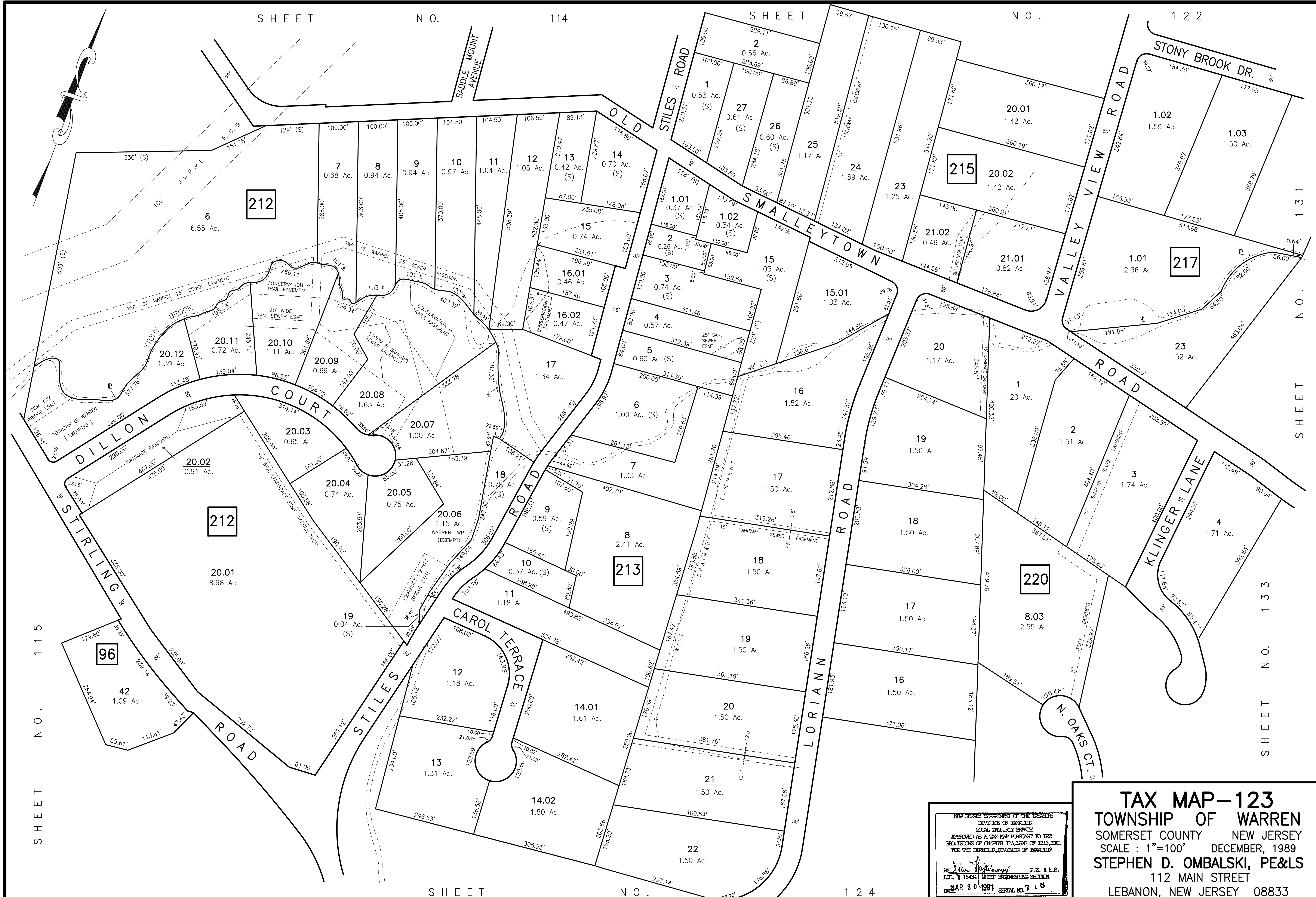


SHEET NO. 114

SHEET NO. 122



SHEET NO. 115

SHEET NO. 131

SHEET NO. 133

SHEET NO.

124

NEW JERSEY DEPARTMENT OF THE TREASURY  
 DIVISION OF TAXATION  
 LOCAL PROPERTY BRANCH  
 APPROVED AS A TAX MAP PURSUANT TO THE  
 PROVISIONS OF CHAPTER 125, LAWS OF 1913, ETC.  
 FOR THE DIRECTOR, DIVISION OF TAXATION

BY: *Stephen D. Ombalski* P.E. & L.S.  
 L.I.C. # 15434 CHIEF ENGINEERING SECTION  
 DATE: MAR 20 1991 SERIAL NO. 7 1 8

**TAX MAP-123**  
 TOWNSHIP OF WARREN  
 SOMERSET COUNTY NEW JERSEY  
 SCALE: 1"=100' DECEMBER, 1989  
**STEPHEN D. OMBALSKI, PE&LS**  
 112 MAIN STREET  
 LEBANON, NEW JERSEY 08833