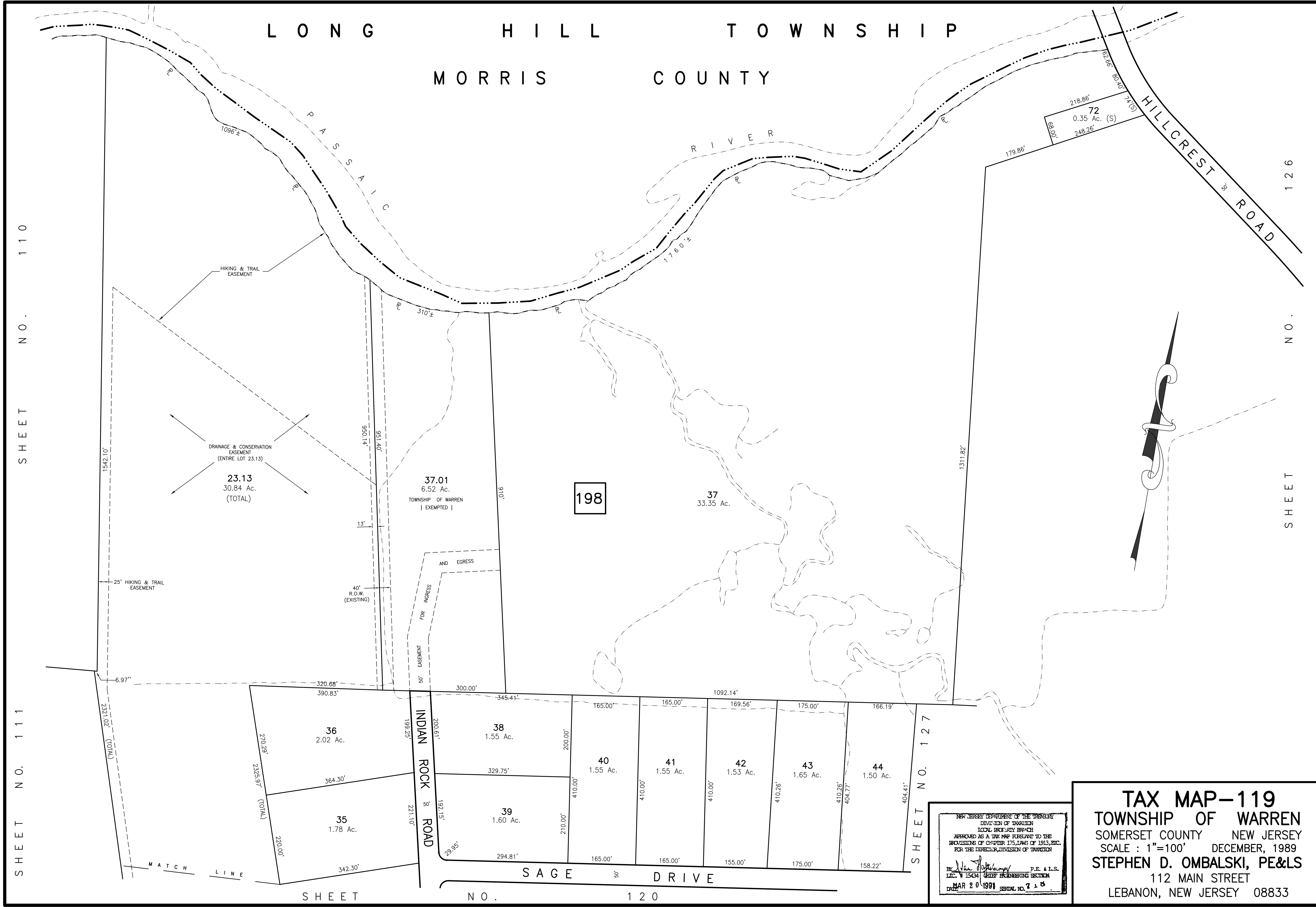


LONG HILL TOWNSHIP
MORRIS COUNTY



SHEET NO. 110
SHEET NO. 111

SHEET NO. 126
SHEET NO. 127

TAX MAP-119
TOWNSHIP OF WARREN
 SOMERSET COUNTY NEW JERSEY
 SCALE : 1"=100' DECEMBER, 1989
STEPHEN D. OMBALSKI, PE&LS
 112 MAIN STREET
 LEBANON, NEW JERSEY 08833

NEW JERSEY DEPARTMENT OF THE TREASURY
 DIVISION OF TAXATION
 LOCAL OFFICE - RYERSON
 APPROVED AS A TAX MAP PURSUANT TO THE
 PROVISIONS OF CHAPTER 175, LAWS OF 1913, ETC.
 FOR THE DIRECTOR, DIVISION OF TAXATION
 BY: *[Signature]* P.E. & L.S.
 LIC. # 15434 CIVIL ENGINEERING SECTION
 DATE: MAR 20 1991 SERIAL NO. 715