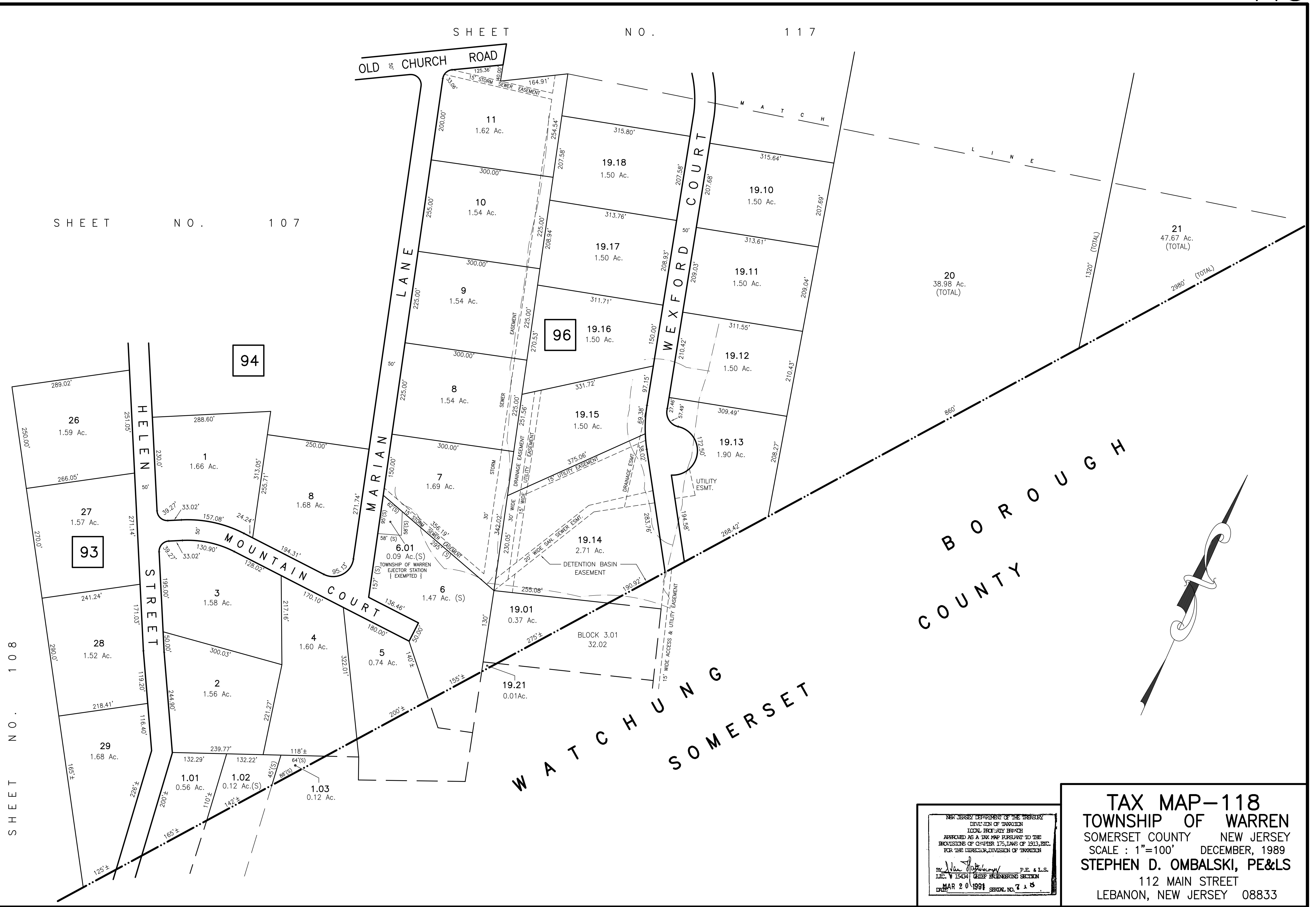


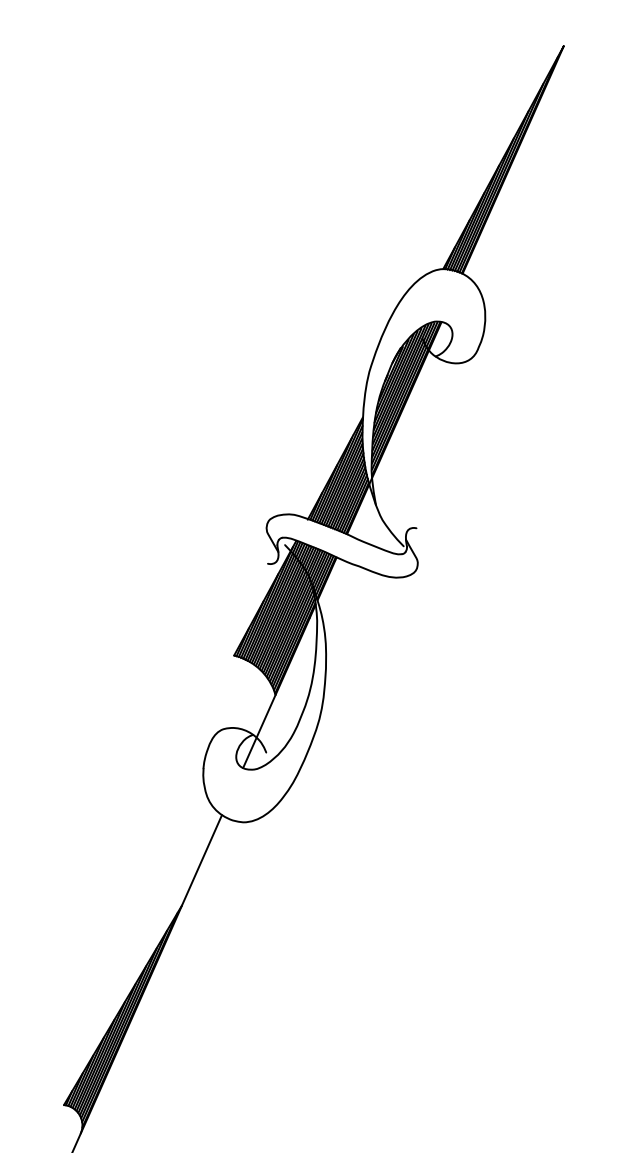
SHEET NO. 117

SHEET NO. 107



BOROUGH COUNTY

WATCHUNG SOMERSET



NEW JERSEY DEPARTMENT OF THE TREASURY  
 DIVISION OF TAXATION  
 LOCAL OFFICE BRANCH  
 APPROVED AS A TAX MAP PURSUANT TO THE  
 PROVISIONS OF CHAPTER 175, LAWS OF 1913, ETC.  
 FOR THE DIRECTOR, DIVISION OF TAXATION

BY: *Stephen D. Ombalski* P.E. & L.S.  
 L.I.C. # 15434  
 DATE: MAR 20 1991 SERIAL NO. 718

**TAX MAP-118**  
**TOWNSHIP OF WARREN**  
 SOMERSET COUNTY NEW JERSEY  
 SCALE: 1"=100' DECEMBER, 1989  
**STEPHEN D. OMBALSKI, PE&LS**  
 112 MAIN STREET  
 LEBANON, NEW JERSEY 08833