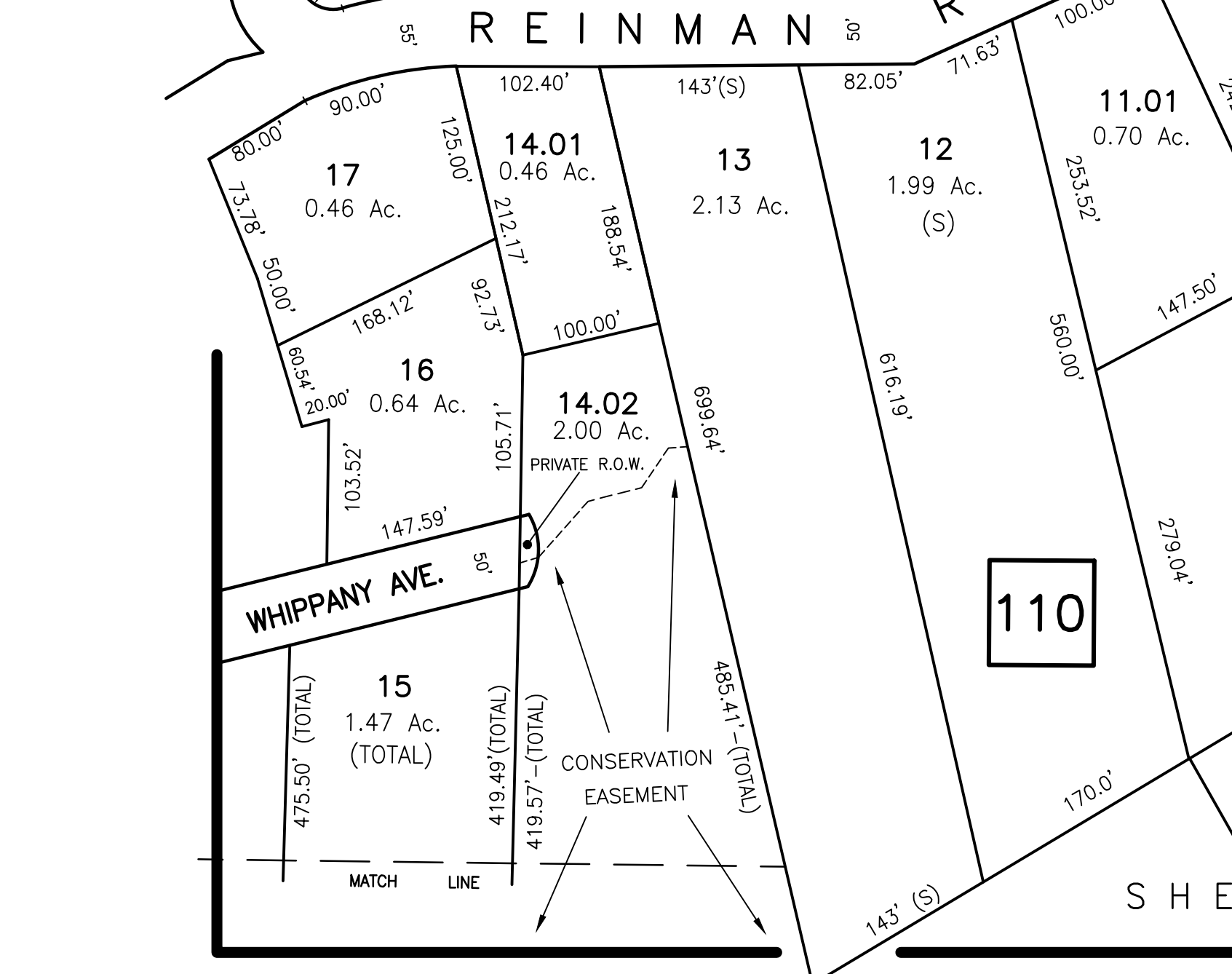
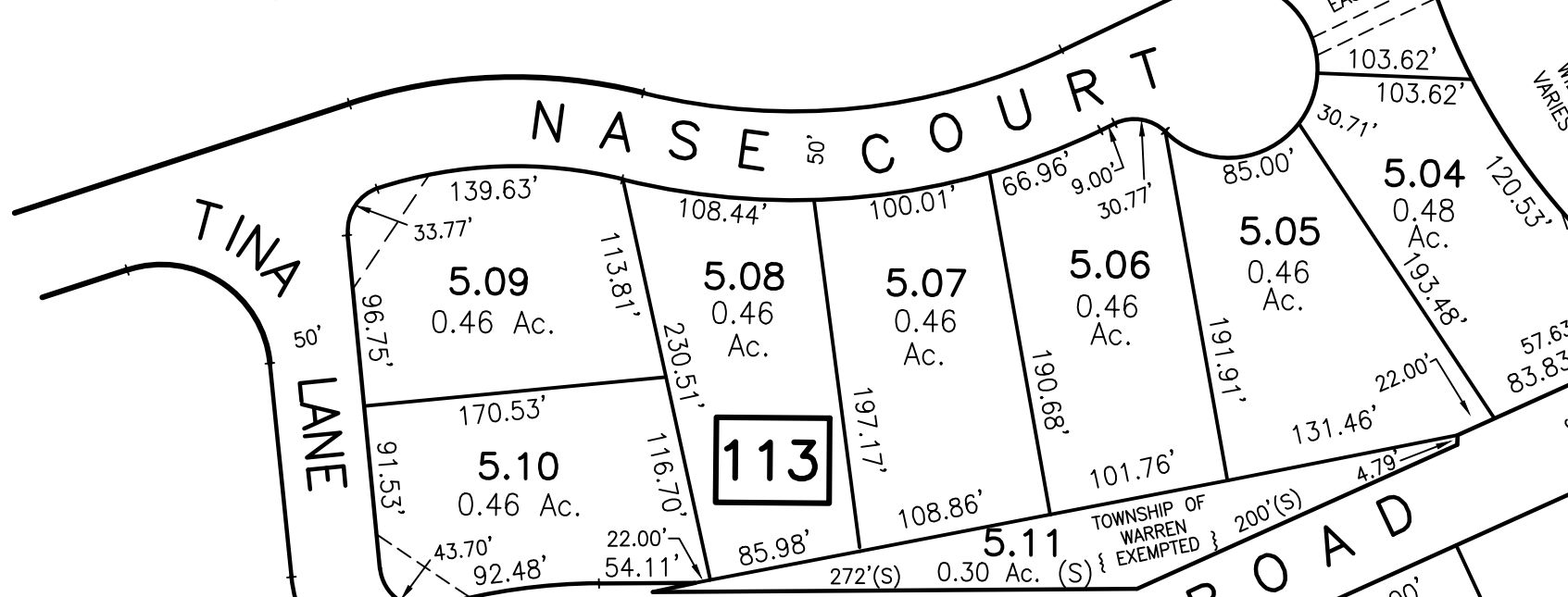
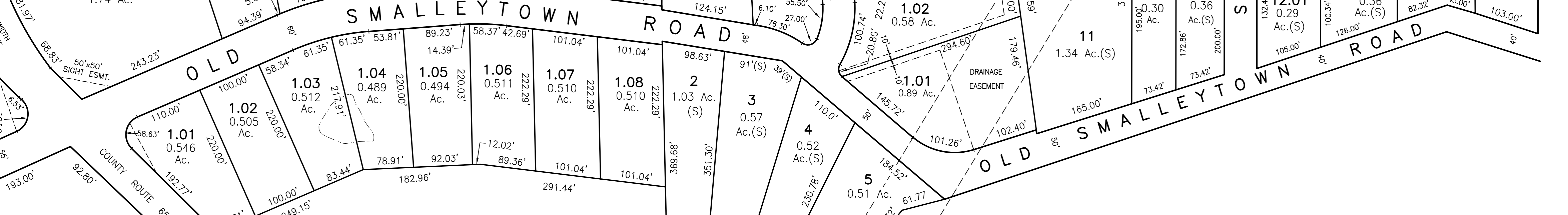
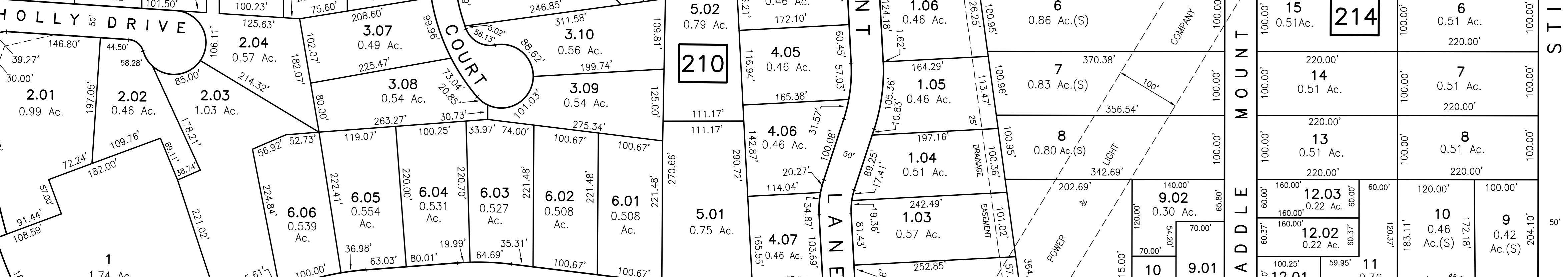
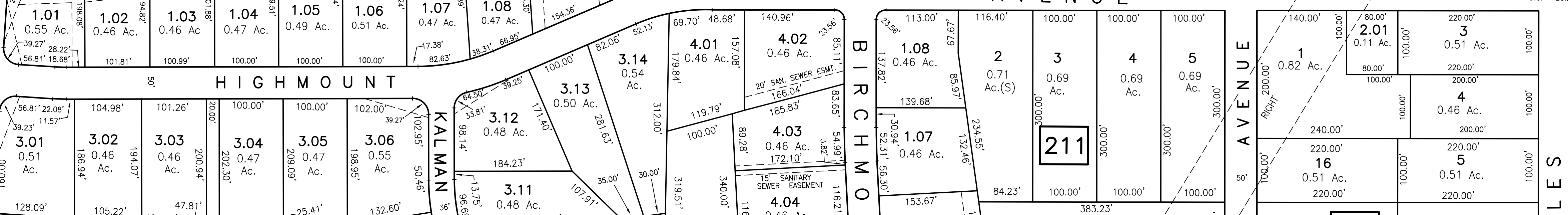
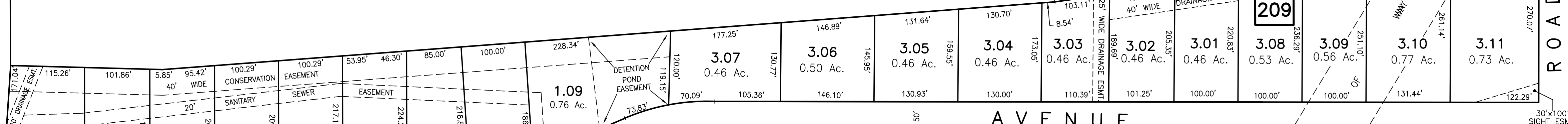
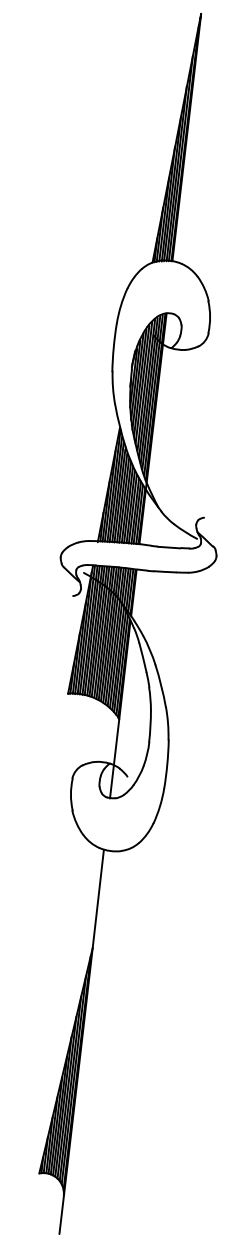


SHEET NO. 113
INTERSTATE HIGHWAY ROUTE 78

INTERSTATE

GRAYS LANE

SHEET NO. 103



SHEET NO. 115

SHEET NO. 123

NEW JERSEY DEPARTMENT OF THE TREASURY
DIVISION OF TAXATION
LOCAL GOVERNMENT BRANCH
APPROVED AS A TAX MAP PURSUANT TO THE
PROVISIONS OF CHAPTER 175, LAWS OF 1913, ETC.
FOR THE DIRECTOR, DIVISION OF TAXATION
BY *Stephen D. Ombalski* P.E. & L.S.
LIC. # 15434 GATE ENGINEERING SECTION
DATE: MAR 20 1991 SERIAL NO. 715

TAX MAP-114
TOWNSHIP OF WARREN
SOMERSET COUNTY NEW JERSEY
SCALE: 1"=100' DECEMBER, 1989
STEPHEN D. OMBALSKI, PE&LS
112 MAIN STREET
LEBANON, NEW JERSEY 08833