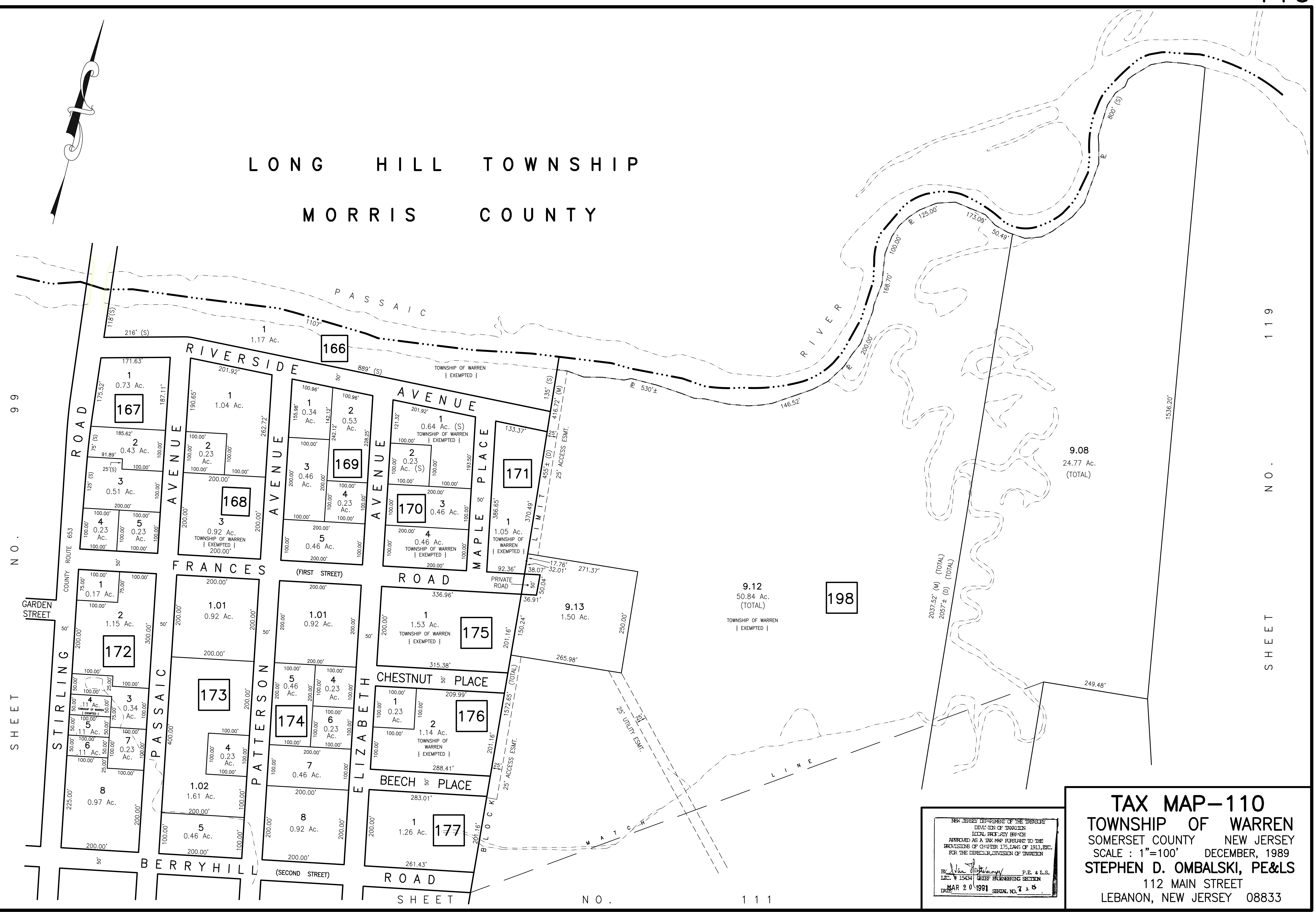
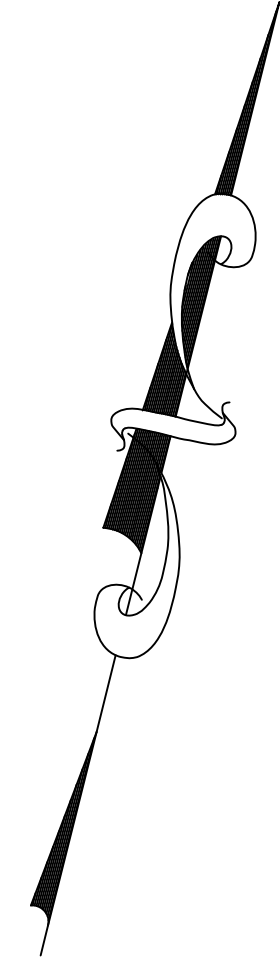


LONG HILL TOWNSHIP  
MORRIS COUNTY



NO. 99 SHEET

NO. 119 SHEET

NEW JERSEY DEPARTMENT OF THE TREASURY  
DIVISION OF TAXATION  
LOCAL OFFICE BRANCH  
APPROVED AS A TAX MAP PURSUANT TO THE  
PROVISIONS OF CHAPTER 175, LAWS OF 1913, ETC.  
FOR THE DIRECTOR, DIVISION OF TAXATION  
BY *Stephen D. Ombalski* P.E. & L.S.  
L.I.C. # 15434 CHIEF ENGINEERING SECTION  
DATE: MAR 20 1991 SERIAL NO. 7 1 5

**TAX MAP-110**  
TOWNSHIP OF WARREN  
SOMERSET COUNTY NEW JERSEY  
SCALE: 1"=100' DECEMBER, 1989  
**STEPHEN D. OMBALSKI, PE&LS**  
112 MAIN STREET  
LEBANON, NEW JERSEY 08833

NO. 111 SHEET