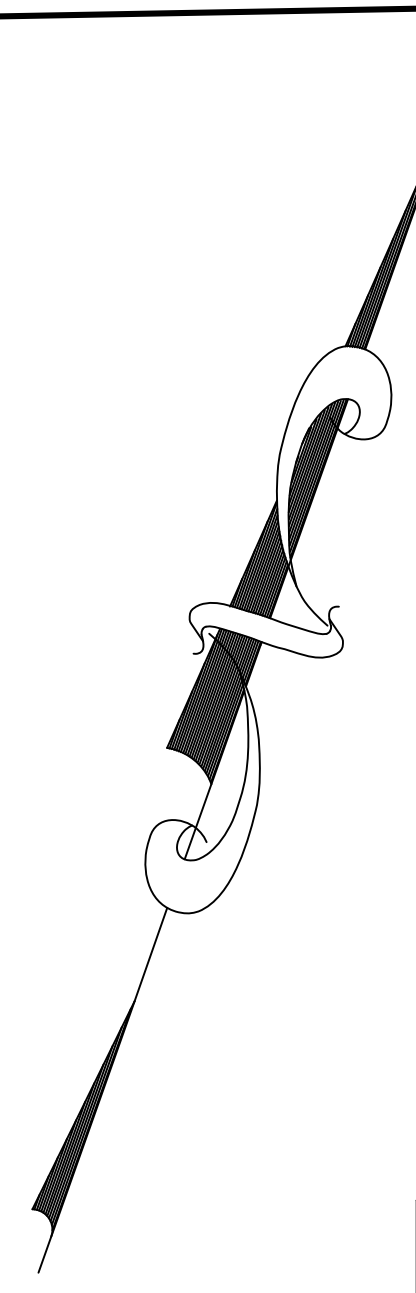


SHEET NO. 95

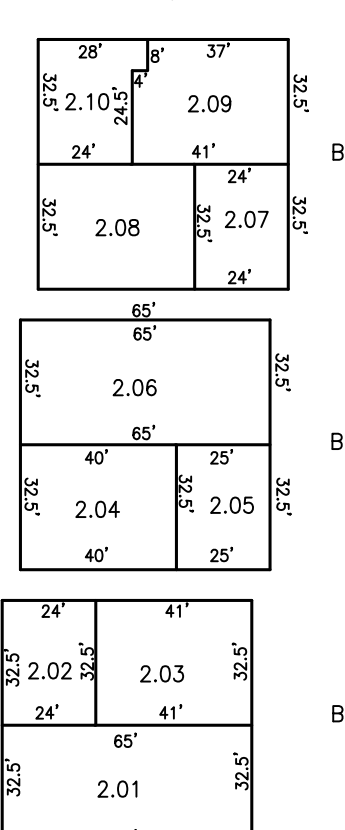
SHEET NO. 107

SHEET NO. 96

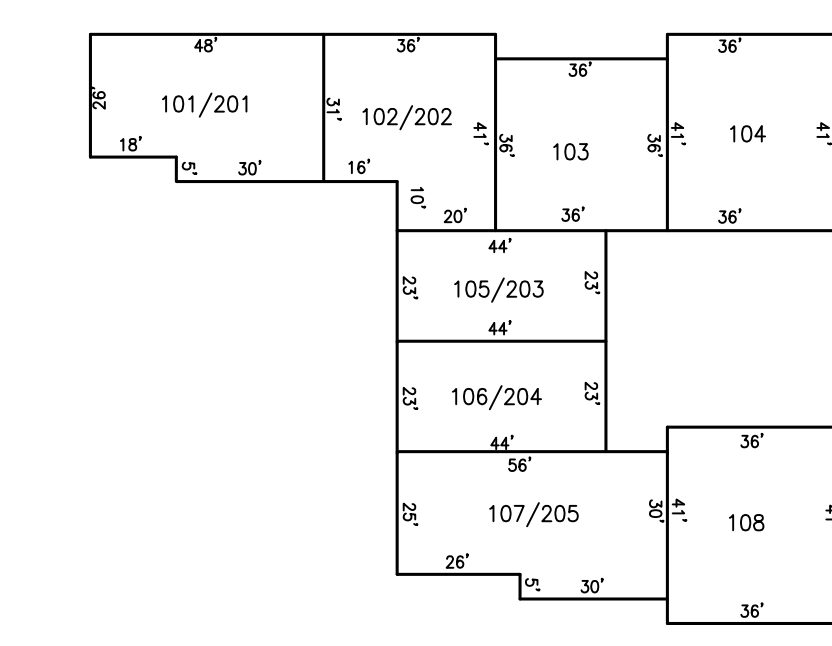
SHEET NO. 118



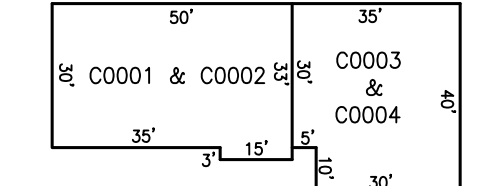
DETAIL OF "CROSSPOINT" BLOCK 87.03 LOT 2  
1" = 50'



DETAIL OF "WARREN COMMONS" BLOCK 88 LOT 10  
1" = 40'



DETAIL OF "EXECUTIVE PLAZA" BLOCK 93 LOT 2  
1" = 40'



SHEET NO. 109

NEW JERSEY DEPARTMENT OF THE TREASURY  
DIVISION OF TAXATION  
LOCAL PROPERTY TAX  
APPROVED AS A TAX MAP PURSUANT TO THE  
PROVISIONS OF CHAPTER 175, LAWS OF 1913, ETC.  
FOR THE DIRECTOR, DIVISION OF TAXATION  
  
P.E. & L.S.  
STEPHEN D. OMBALSKI, PE & LS  
112 MAIN STREET  
LEBANON, NEW JERSEY 08833

**TAX MAP-108**  
TOWNSHIP OF WARREN  
SOMERSET COUNTY NEW JERSEY  
SCALE : 1"=100' DECEMBER, 1989  
**STEPHEN D. OMBALSKI, PE&LS**  
112 MAIN STREET  
LEBANON, NEW JERSEY 08833