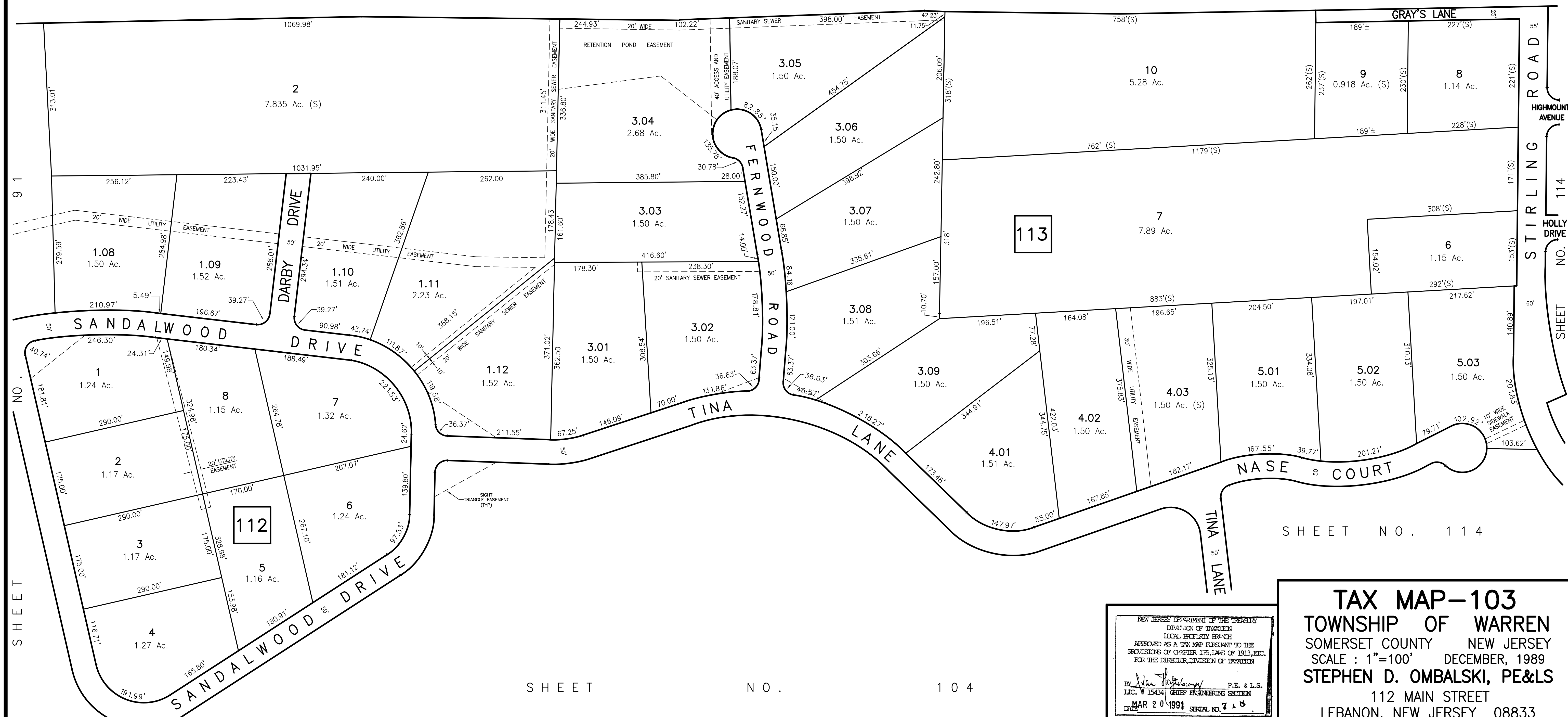
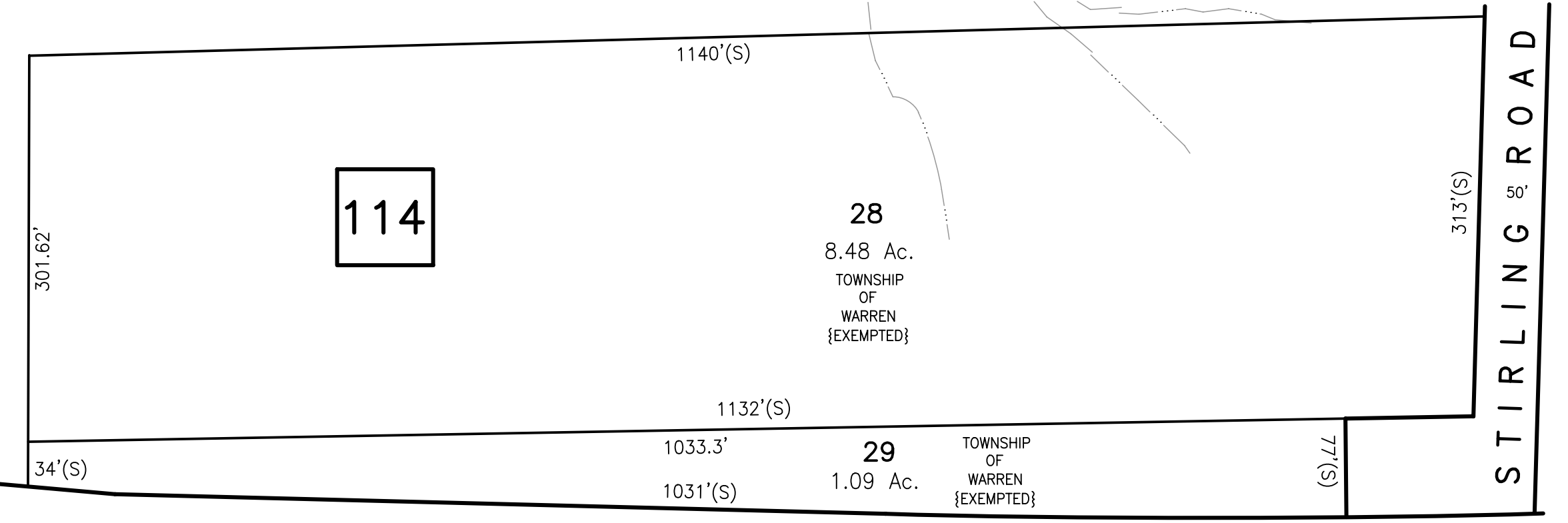


SHEET NO. 102



INTERSTATE HIGHWAY ROUTE 78



91

NO.

SHEET

SHEET NO. 104

SHEET NO. 113

114

SHEET NO. 114

SHEET NO. 114

NEW JERSEY DEPARTMENT OF THE TREASURY  
DIVISION OF TAXATION  
LOCAL PROPERTY TAXES  
APPROVED AS A TAX MAP PURSUANT TO THE  
PROVISIONS OF CHAPTER 175, LAWS OF 1913, ETC.  
FOR THE DIRECTOR, DIVISION OF TAXATION  
*Stephen D. Ombalski* P.E. & L.S.  
LIC. # 15434 CHIEF ENGINEERING SECTION  
DATE: MAR 20 1991 SERIAL NO. 718

**TAX MAP-103**  
**TOWNSHIP OF WARREN**  
SOMERSET COUNTY NEW JERSEY  
SCALE: 1"=100' DECEMBER, 1989  
**STEPHEN D. OMBALSKI, PE&LS**  
112 MAIN STREET  
LEBANON, NEW JERSEY 08833