

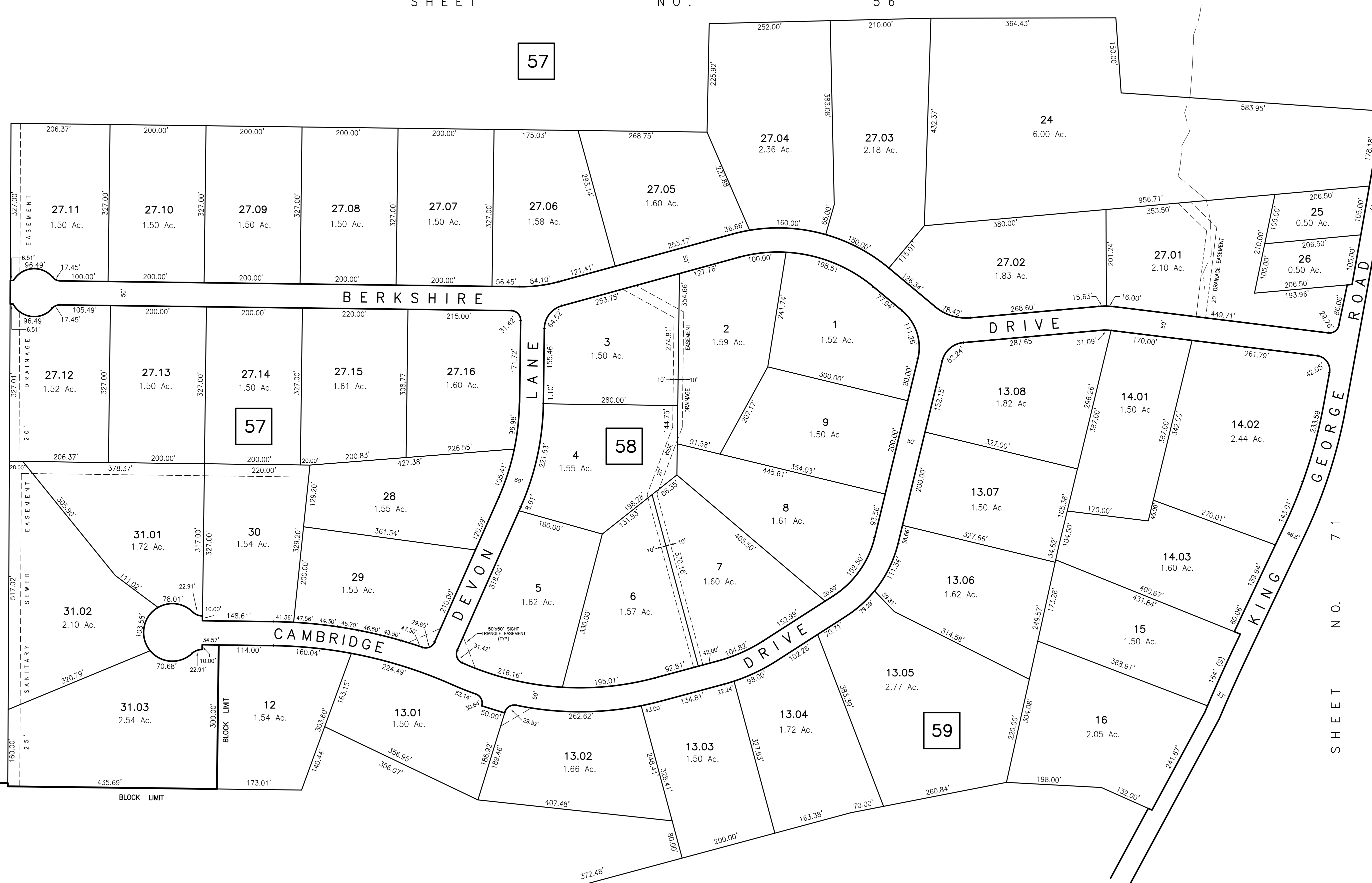
57

SHEET NO. 44

SHEET NO. 45

SHEET NO. 70

SHEET NO. 71



11
27.81 Ac.
(TOTAL)
SOMERSET COUNTY
EXEMPTED

NEW JERSEY DEPARTMENT OF THE TREASURY
DIVISION OF TAXATION
LOCAL PREPARY SERVICE
APPROVED AS A TAX MAP PURSUANT TO THE
PROVISIONS OF CHAPTER 175, LAWS OF 1913, ETC.
FOR THE DIRECTOR, DIVISION OF TAXATION
By *Stephen D. Ombalski* P.E. & L.S.
LIC. # 15434 CIVIL ENGINEERING SECTION
DATE: MAR 20 1991 SERIAL NO. 718

TAX MAP-57
TOWNSHIP OF WARREN
SOMERSET COUNTY NEW JERSEY
SCALE: 1"=100' DECEMBER, 1989
STEPHEN D. OMBALSKI, PE&LS
112 MAIN STREET
LEBANON, NEW JERSEY 08833

