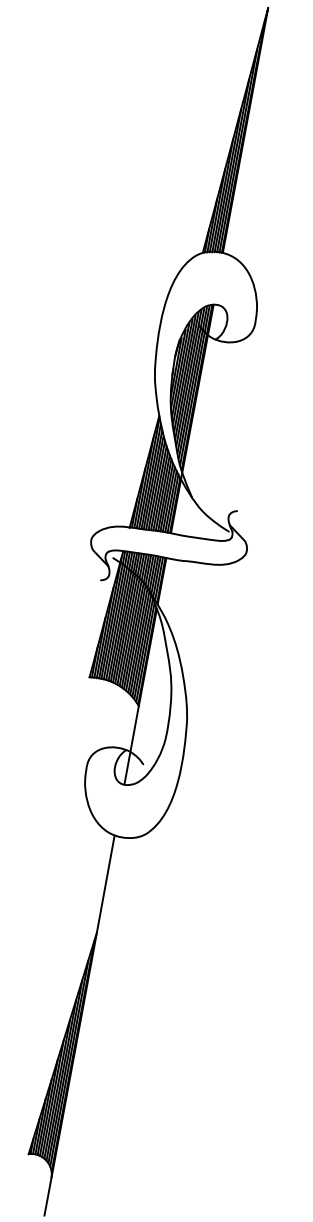
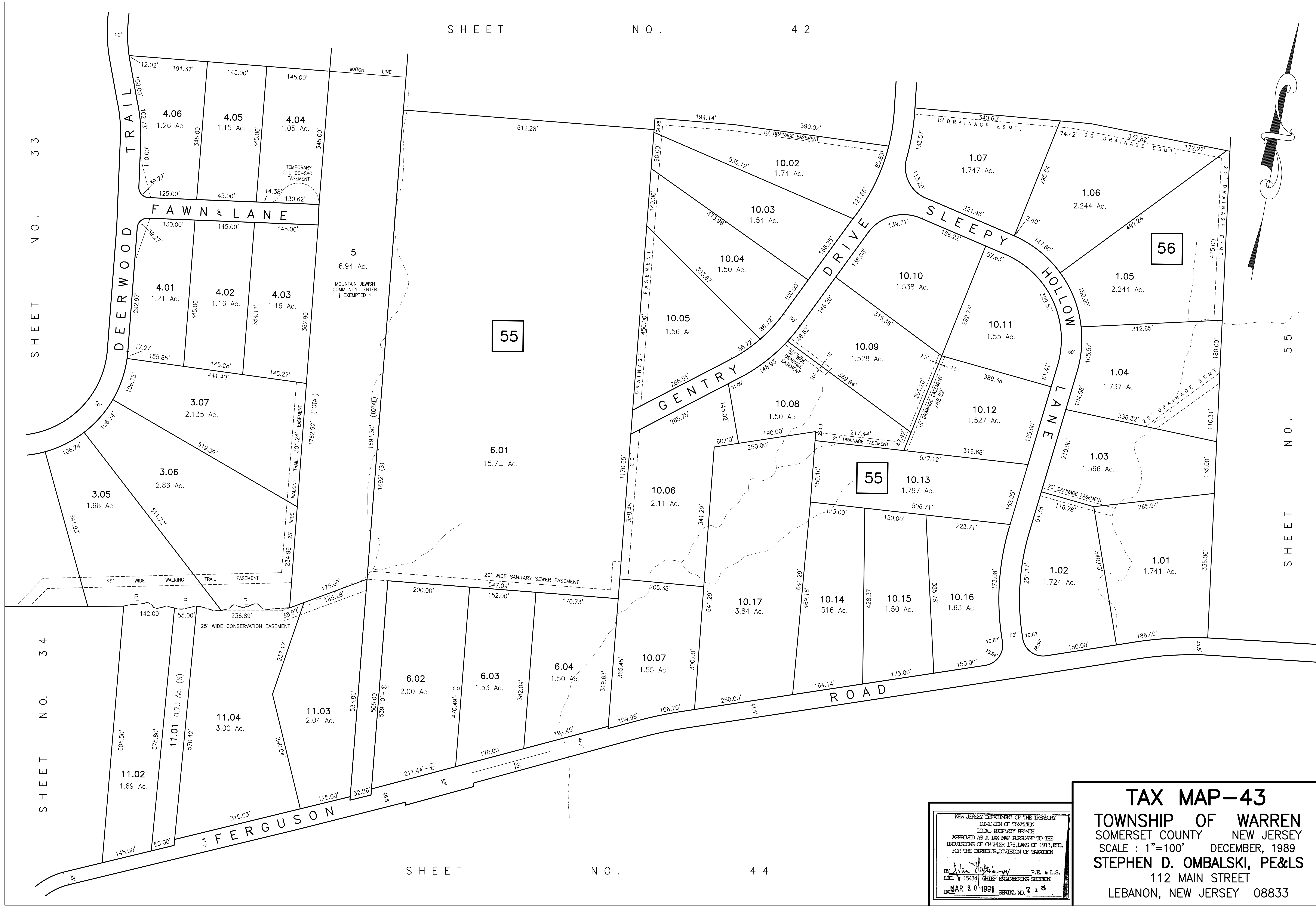


SHEET NO. 33
SHEET NO. 34

SHEET NO. 55



NEW JERSEY DEPARTMENT OF THE TREASURY
 DIVISION OF TAXATION
 LOCAL TAX MAPS SECTION
 APPROVED AS A TAX MAP PURSUANT TO THE
 PROVISIONS OF CHAPTER 175, LAWS OF 1913, ETC.
 FOR THE DIRECTOR, DIVISION OF TAXATION

Stephen D. Ombalski
 P.E. & L.S.
 LIC. # 15434
 MAR 20 1991
 SERIAL NO. 718

TAX MAP-43
TOWNSHIP OF WARREN
 SOMERSET COUNTY NEW JERSEY
 SCALE: 1"=100' DECEMBER, 1989
STEPHEN D. OMBALSKI, PE&LS
 112 MAIN STREET
 LEBANON, NEW JERSEY 08833