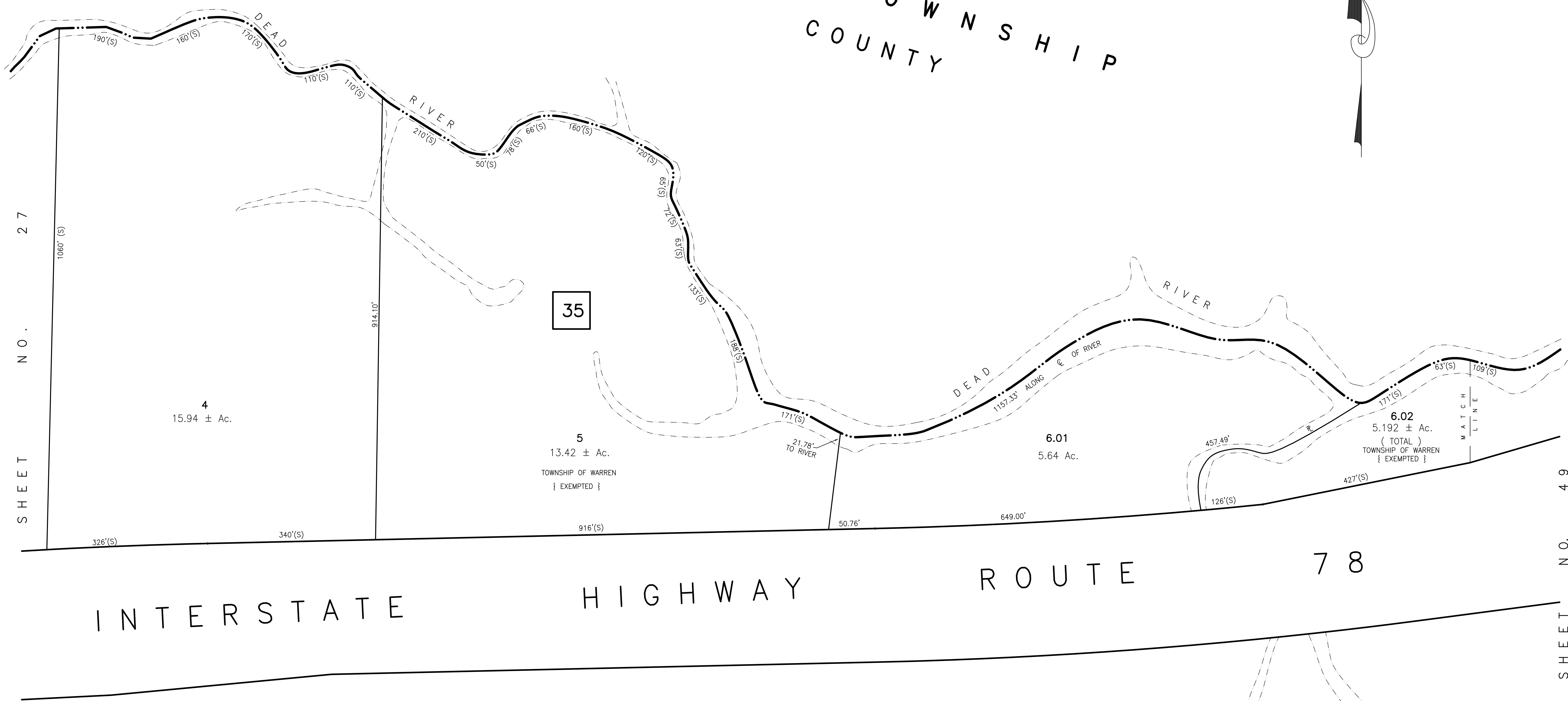
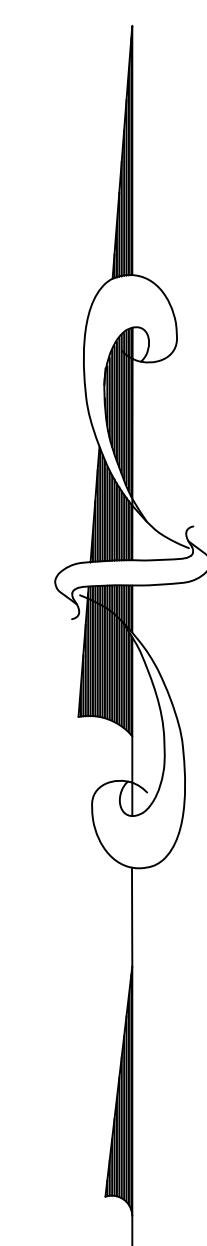


B E R N A R D S
S O M E R S E T

T O W N S H I P
C O U N T Y



S H E E T
N O .
2 7

S H E E T
N O .
4 9

I N T E R S T A T E

H I G H W A Y

R O U T E

7 8

S H E E T

N O .

3 8

NEW JERSEY DEPARTMENT OF THE TREASURY
DIVISION OF TAXATION
LOCAL PROPERTY BRANCH
APPROVED AS A TAX MAP PURSUANT TO THE
PROVISIONS OF CHAPTER 125, LAWS OF 1913, ETC.
FOR THE DIRECTOR, DIVISION OF TAXATION
Stephen D. Ombalski P.E. & L.S.
LIC. # 15434
DATE: MAR 20 1991 SERIAL NO. 718

TAX MAP-37
TOWNSHIP OF WARREN
SOMERSET COUNTY NEW JERSEY
SCALE : 1"=100' DECEMBER, 1989
STEPHEN D. OMBALSKI, PE&LS
112 MAIN STREET
LEBANON, NEW JERSEY 08833