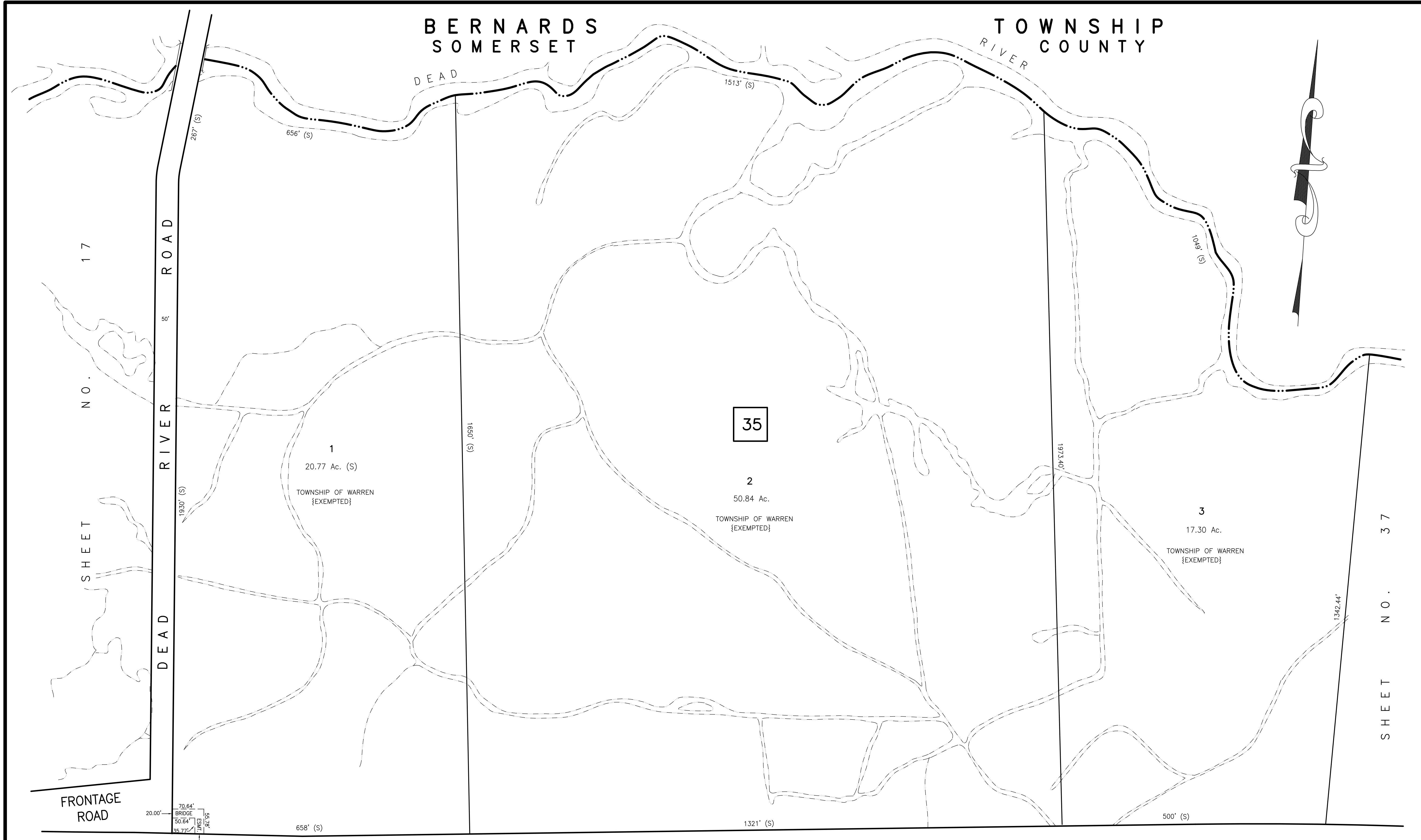


BERNARDS  
SOMERSET

TOWNSHIP  
COUNTY



INTERSTATE HIGHWAY ROUTE 78

SHEET NO. 28

NEW JERSEY DEPARTMENT OF THE TREASURY  
DIVISION OF TAXATION  
LOCAL OFFICE - RYERSON  
APPROVED AS A TAX MAP PURSUANT TO THE  
PROVISIONS OF CHAPTER 175, LAWS OF 1913, ETC.  
FOR THE DIRECTOR, DIVISION OF TAXATION

By *Wm. J. Ombalski* P.E. & L.S.  
LIC. # 15434 CIVIL ENGINEERING SECTION  
DATE: MAR 20 1991 SERIAL NO. 7 1 5

**TAX MAP-27**  
TOWNSHIP OF WARREN  
SOMERSET COUNTY NEW JERSEY  
SCALE: 1"=100' DECEMBER, 1989  
**STEPHEN D. OMBALSKI, PE&LS**  
112 MAIN STREET  
LEBANON, NEW JERSEY 08833