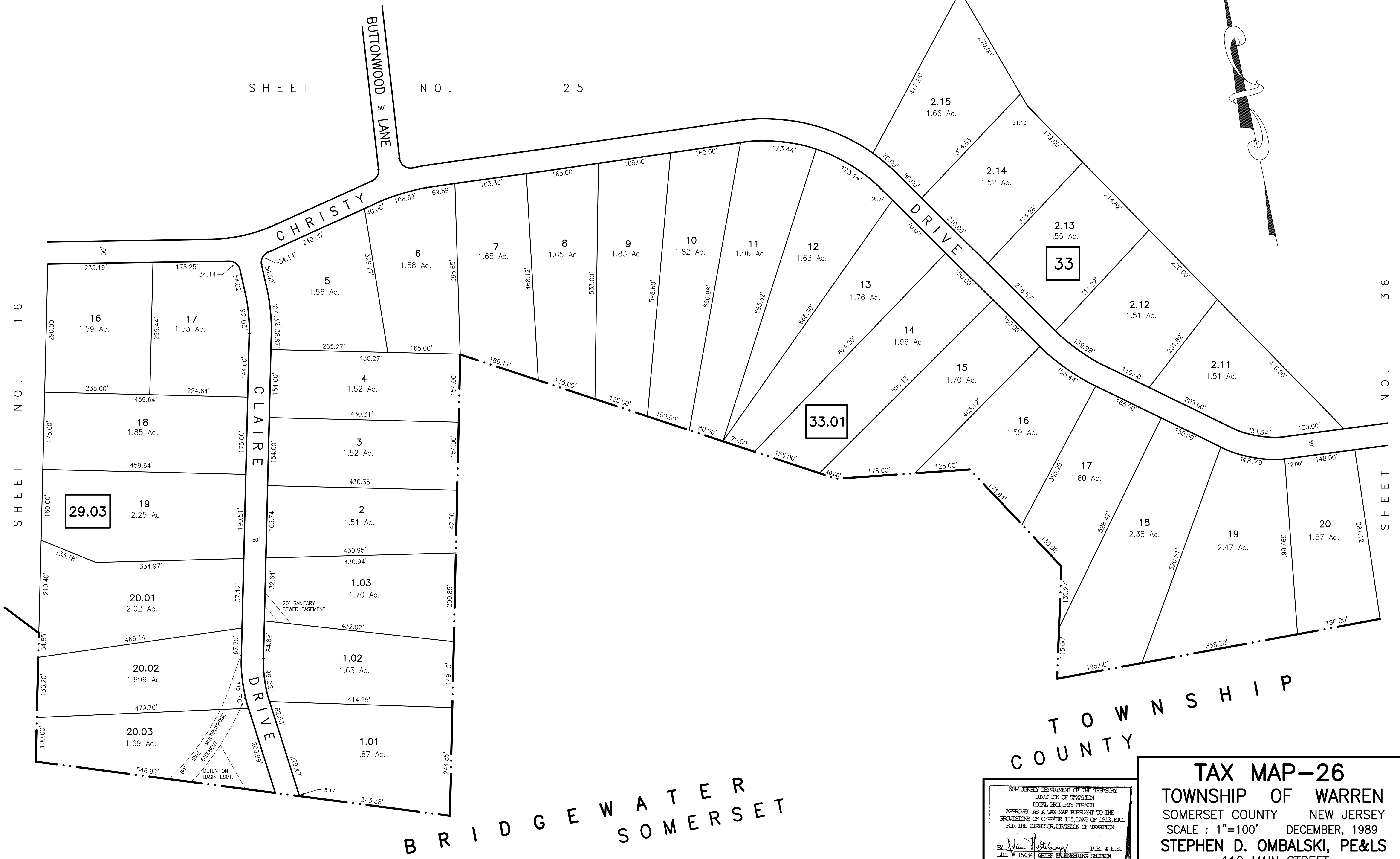
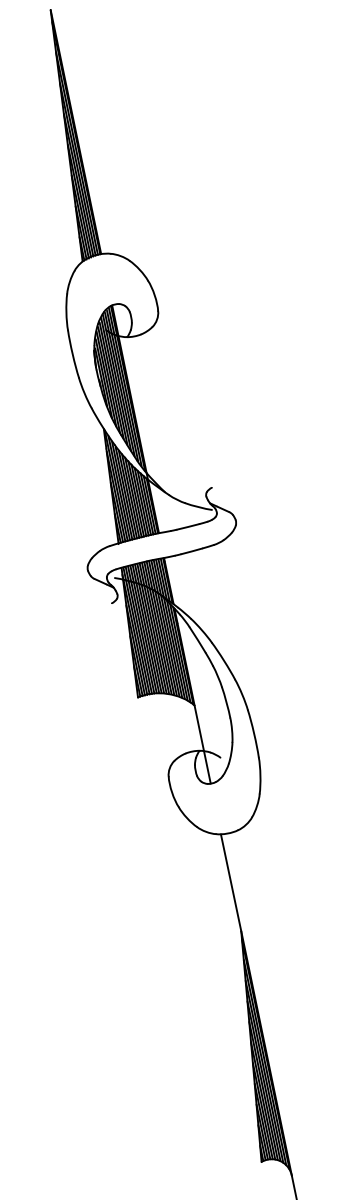


SHEET NO. 25



SHEET NO. 16

SHEET NO. 36

TOWNSHIP COUNTY

BRIDGEWATER SOMERSET

NEW JERSEY DEPARTMENT OF THE TREASURY
 DIVISION OF TAXATION
 LOCAL EXERCISE BRANCH
 APPROVED AS A TAX MAP PURSUANT TO THE
 PROVISIONS OF CHAPTER 175, LAWS OF 1913, ETC.
 FOR THE DIRECTOR, DIVISION OF TAXATION

BY: *Neil Johnson* P.E. & L.S.
 L.I.C. # 15434 CHIEF ENGINEERING SECTION
 DATE: MAR 20 1991 SERIAL NO. 718

TAX MAP-26
 TOWNSHIP OF WARREN
 SOMERSET COUNTY NEW JERSEY
 SCALE: 1"=100' DECEMBER, 1989
STEPHEN D. OMBALSKI, PE&LS
 112 MAIN STREET
 LEBANON, NEW JERSEY 08833