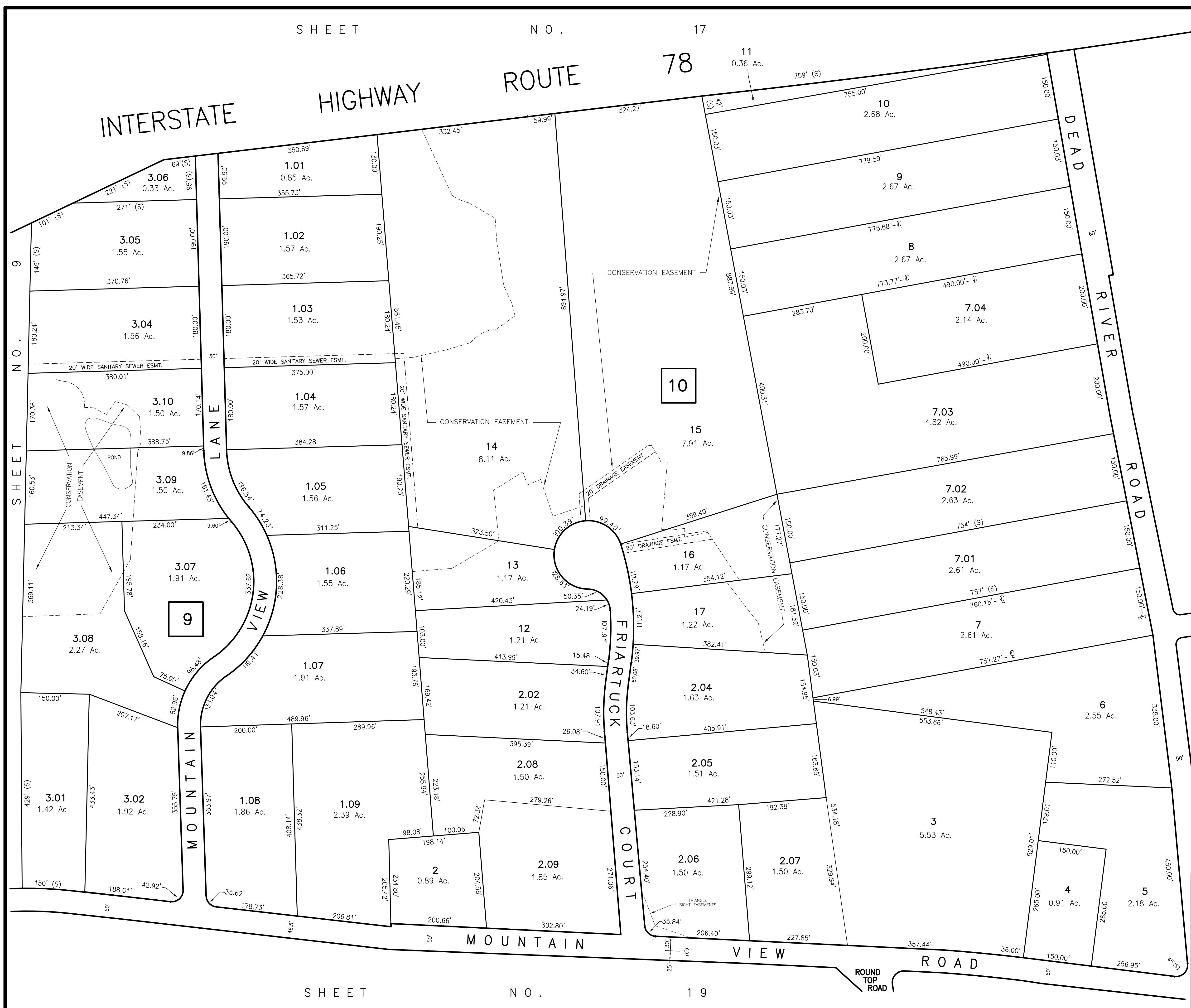


SHEET NO. 17

INTERSTATE HIGHWAY ROUTE 78



SHEET NO. 9

28

SHEET NO.

SHEET

SHEET NO. 19

NEW JERSEY DEPARTMENT OF THE TREASURY
 DIVISION OF TAXATION
 LOCAL PROPERTY TAX
 APPROVED AS A TAX MAP PURSUANT TO THE
 PROVISIONS OF CHAPTER 175, LAWS OF 1913, ETC.
 FOR THE DIRECTOR, DIVISION OF TAXATION

BY: *[Signature]* P.E. & L.S.
 I.C. # 15434 CHIEF ENGINEERING SECTION
 MAR 20 1991 SERIAL NO. 218

TAX MAP-18
 TOWNSHIP OF WARREN
 SOMERSET COUNTY NEW JERSEY
 SCALE: 1"=100' DECEMBER, 1989
STEPHEN D. OMBALSKI, PE&LS
 112 MAIN STREET
 LEBANON, NEW JERSEY 08833