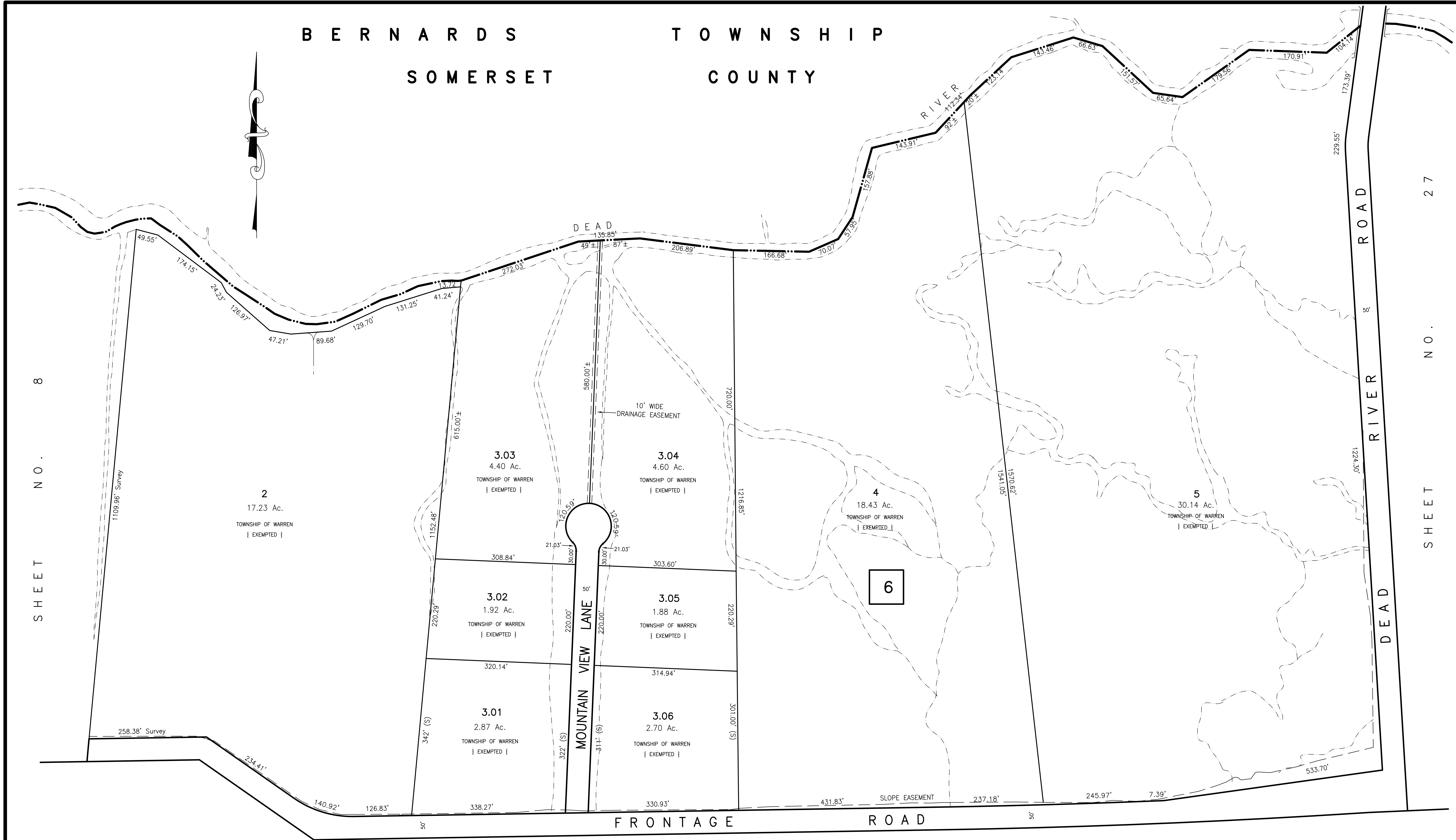


BERNARDS TOWNSHIP
SOMERSET COUNTY



SHEET NO. 8

SHEET NO. 27

INTERSTATE HIGHWAY ROUTE 78

SHEET NO. 18

NEW JERSEY DEPARTMENT OF THE TREASURY
DIVISION OF TAXATION
LOCAL OFFICE BRANCH
APPROVED AS A TAX MAP PURSUANT TO THE
PROVISIONS OF CHAPTER 175, LAWS OF 1913, ETC.
FOR THE DIRECTOR, DIVISION OF TAXATION

By: *Walter J. Ombalski* P.E. & L.S.
LIC. # 15434 CHIEF ENGINEERING SECTION
DATE: MAR 20 1991 SERIAL NO. 718

TAX MAP-17
TOWNSHIP OF WARREN
SOMERSET COUNTY NEW JERSEY
SCALE: 1"=100' DECEMBER, 1989
STEPHEN D. OMBALSKI, PE&LS
112 MAIN STREET
LEBANON, NEW JERSEY 08833