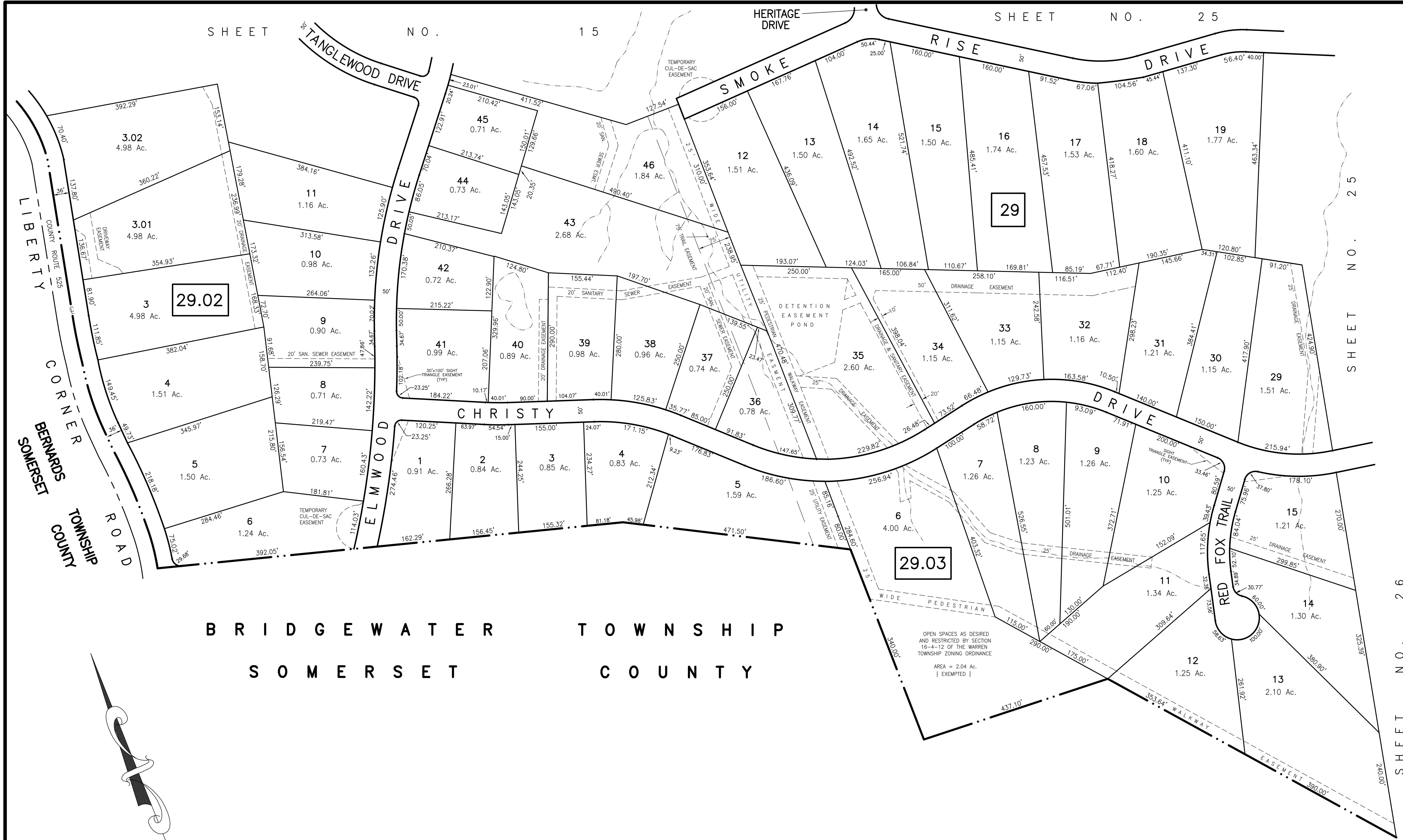
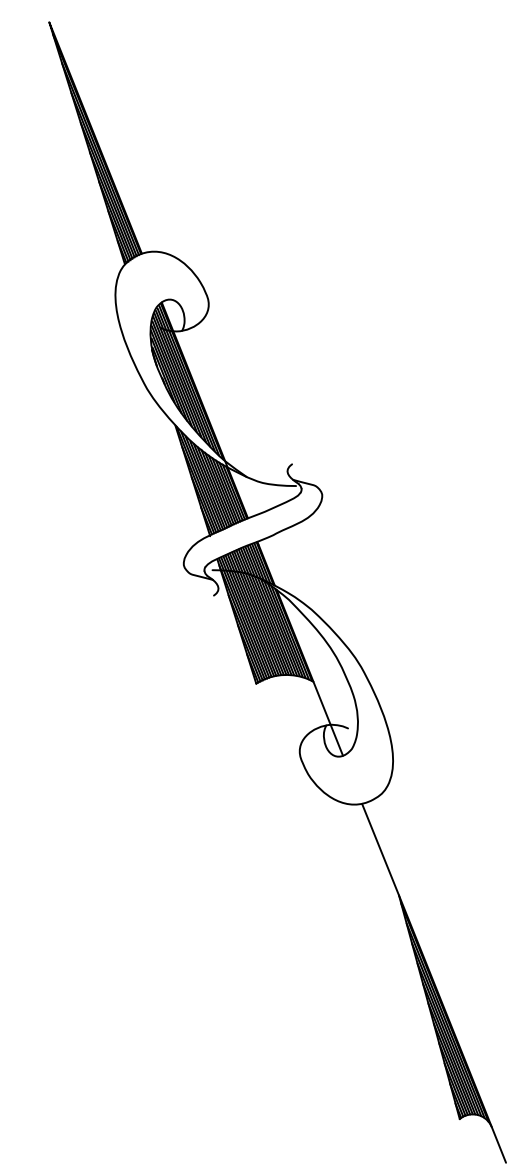


SHEET NO. 15 SHEET NO. 25



BRIDGEWATER TOWNSHIP
SOMERSET COUNTY



NEW JERSEY DEPARTMENT OF THE TREASURY
DIVISION OF TAXATION
LOCAL EXERCISE BRANCH
APPROVED AS A TAX MAP PURSUANT TO THE
PROVISIONS OF CHAPTER 175, LAWS OF 1913, ETC.
FOR THE DIRECTOR, DIVISION OF TAXATION

By: *Stephen D. Ombalski* P.E. & L.S.
L.I.C. # 15434 CHIEF ENGINEERING SECTION
DATE: MAR 20 1991 SERIAL NO. 718

TAX MAP-16
TOWNSHIP OF WARREN
SOMERSET COUNTY NEW JERSEY
SCALE : 1"=100' DECEMBER, 1989
STEPHEN D. OMBALSKI, PE&LS
112 MAIN STREET
LEBANON, NEW JERSEY 08833