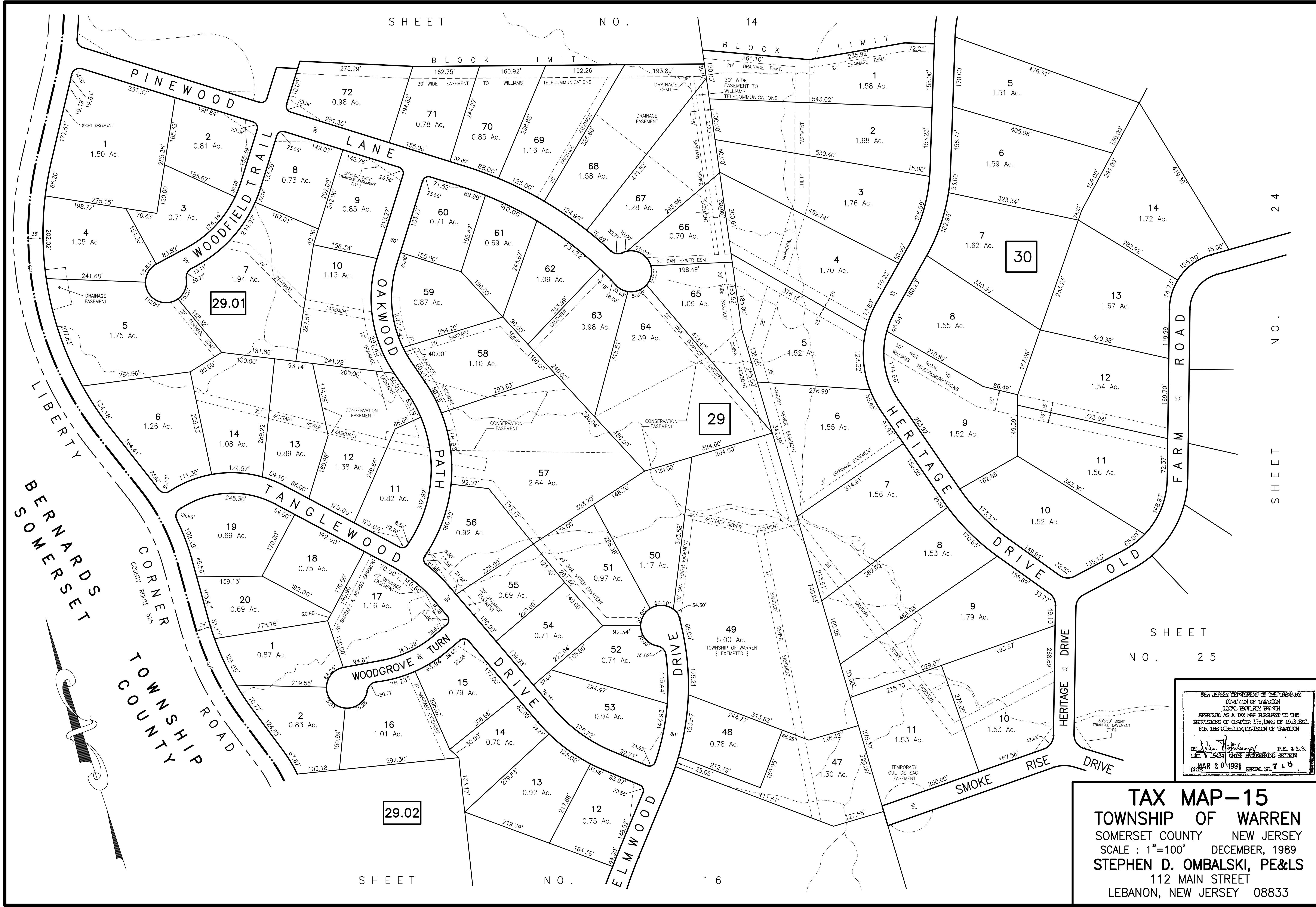


SHEET NO. 14



LIBERTY
SOMERSET
TOWNSHIP
CORNERS
COUNTY ROUTE 525

SHEET NO. 25

NEW JERSEY DEPARTMENT OF THE TREASURY
DIVISION OF TAXATION
LOCAL PROPERTY TAXES
APPROVED AS A TAX MAP PURSUANT TO THE
PROVISIONS OF CHAPTER 175, LAWS OF 1913, ETC.
FOR THE DIRECTOR, DIVISION OF TAXATION
Stephen D. Ombalski P.E. & L.S.
L.I.C. # 15434 CHIEF ENGINEERING SECTION
MAR 20 1991 SERIAL NO. 718

TAX MAP-15
TOWNSHIP OF WARREN
SOMERSET COUNTY NEW JERSEY
SCALE : 1"=100' DECEMBER, 1989
STEPHEN D. OMBALSKI, PE&LS
112 MAIN STREET
LEBANON, NEW JERSEY 08833