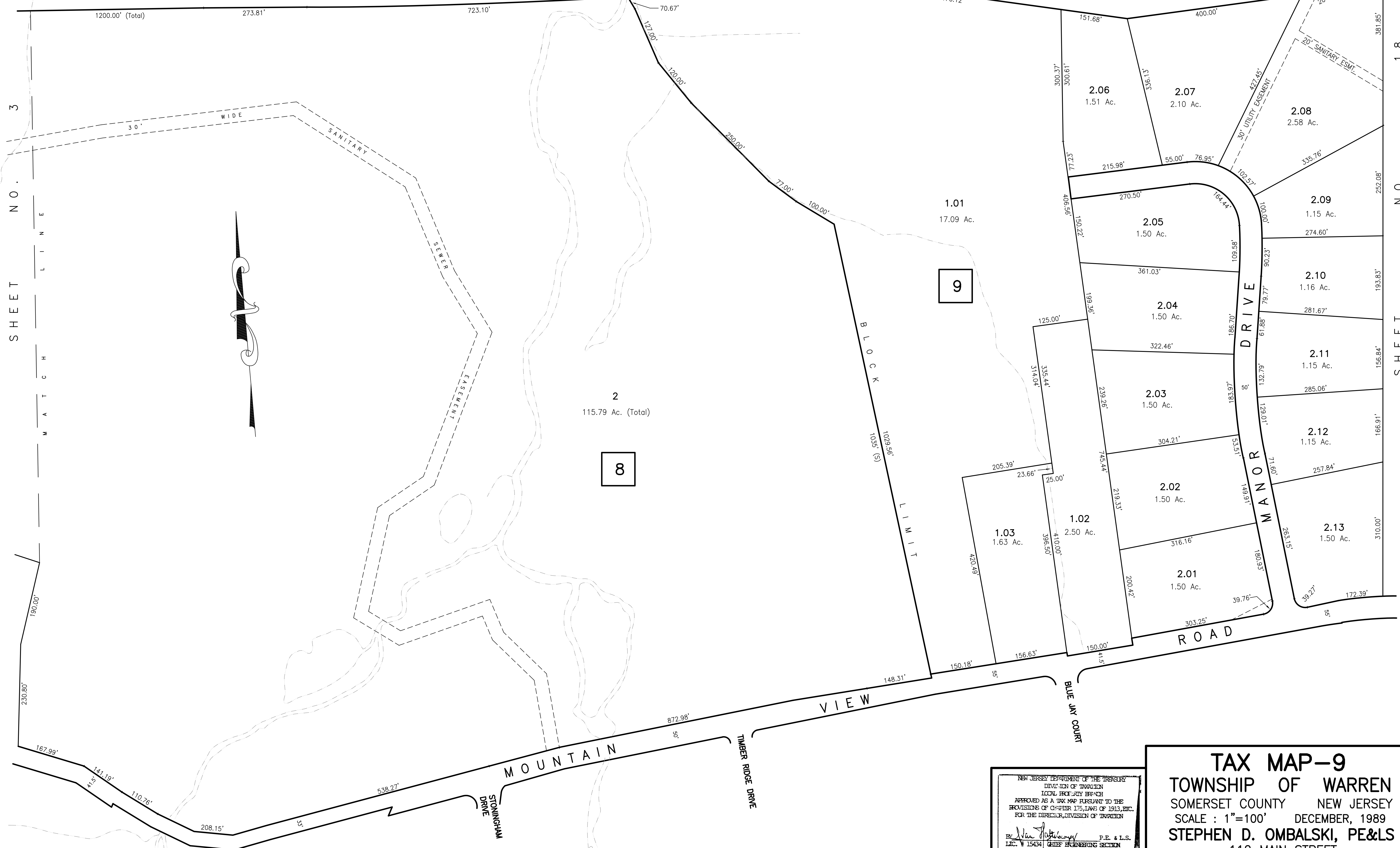


SHEET NO. 8

# INTERSTATE HIGHWAY ROUTE 78



SHEET NO. 3  
MATCH LINE

SHEET NO. 18

SHEET NO. 4

SHEET NO. 10

NEW JERSEY DEPARTMENT OF THE TREASURY  
 DIVISION OF TAXATION  
 LOCAL PROPERTY BRANCH  
 APPROVED AS A TAX MAP PURSUANT TO THE  
 PROVISIONS OF CHAPTER 175, LAWS OF 1913, ETC.  
 FOR THE DIRECTOR, DIVISION OF TAXATION

By: *Neil Johnson* P.E. & L.S.  
 LIC. # 15434 CHIEF ENGINEERING SECTION  
 DATE: MAR 20 1991 SERIAL NO. 718

**TAX MAP-9**  
**TOWNSHIP OF WARREN**  
 SOMERSET COUNTY NEW JERSEY  
 SCALE : 1"=100' DECEMBER, 1989  
**STEPHEN D. OMBALSKI, PE&LS**  
 112 MAIN STREET  
 LEBANON, NEW JERSEY 08833