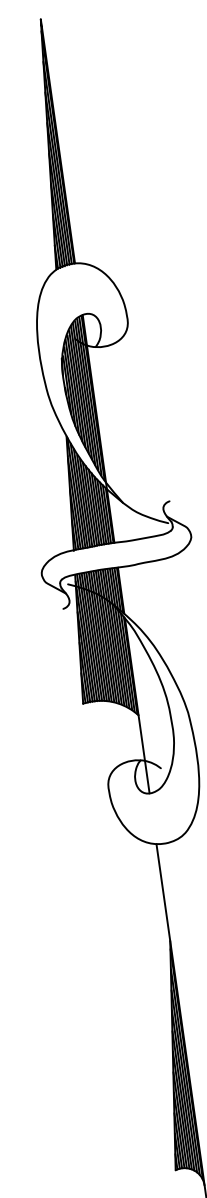
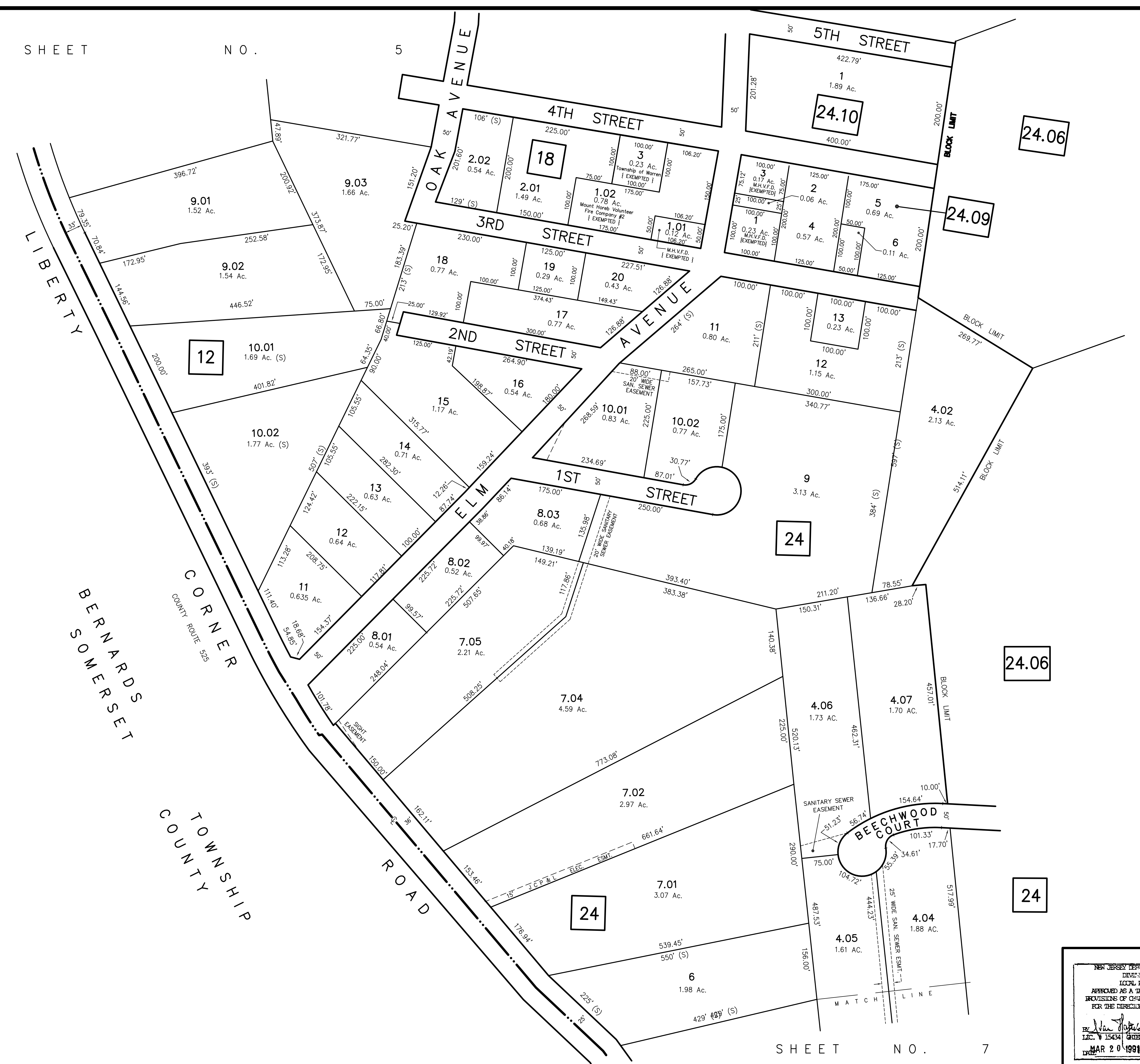


SHEET NO. 5



SHEET NO. 12

BERNARDS
SOMERSET
TOWNSHIP
COUNTY

SHEET NO. 7

NEW JERSEY DEPARTMENT OF TREASURY
DIVISION OF TAXATION
LOCAL PROFIT BENCH
APPROVED AS A TAX MAP PURSUANT TO THE
PROVISIONS OF CHAPTER 175, LAWS OF 1913, ETC.
FOR THE DIRECTOR, DIVISION OF TAXATION

BY: *Neil J. Ombalski* P.E. & L.S.
LIC. # 15434 CHIEF ENGINEERING SECTION
DATE: MAR 20 1991 SERIAL NO. 718

TAX MAP-6
TOWNSHIP OF WARREN
SOMERSET COUNTY NEW JERSEY
SCALE : 1"=100' DECEMBER, 1989
STEPHEN D. OMBALSKI, PE&LS
112 MAIN STREET
LEBANON, NEW JERSEY 08833