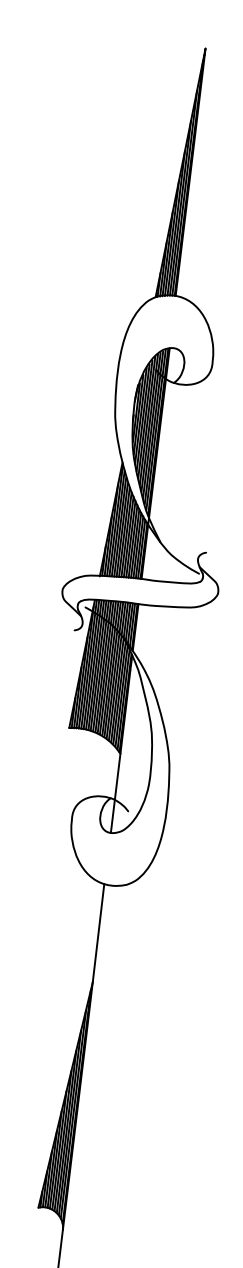
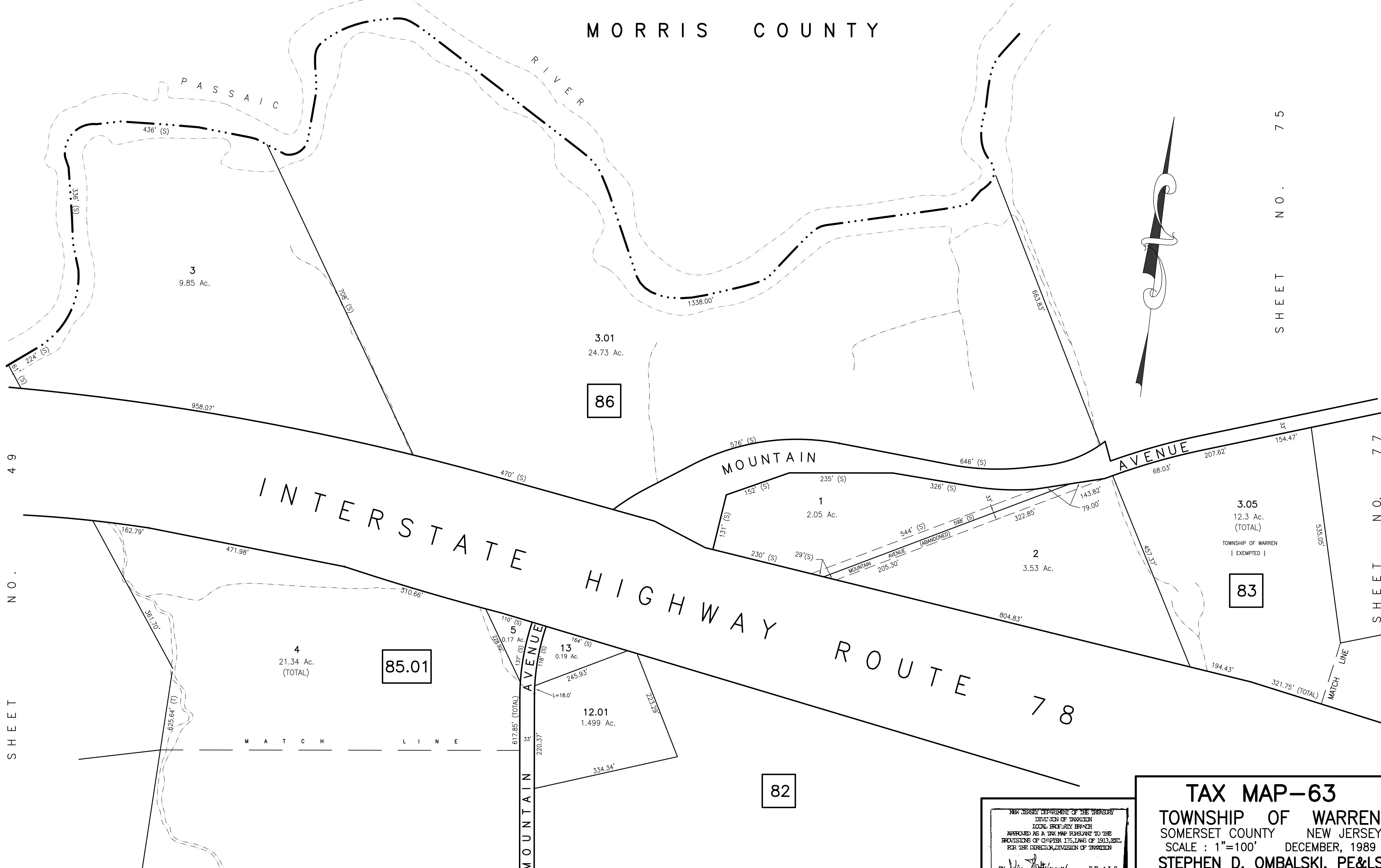


LONG HILL TOWNSHIP
MORRIS COUNTY



SHEET NO. 75



SHEET NO. 49

SHEET NO. 77

TAX MAP-63
TOWNSHIP OF WARREN
 SOMERSET COUNTY NEW JERSEY
 SCALE : 1"=100' DECEMBER, 1989
STEPHEN D. OMBALSKI, PE&LS
 112 MAIN STREET
 LEBANON, NEW JERSEY 08833

NEW JERSEY DEPARTMENT OF THE TREASURY
 DIVISION OF TAXATION
 LOCAL PROPERTY BRANCH
 APPROVED AS A TAX MAP PURSUANT TO THE
 PROVISIONS OF CHAPTER 175, LAWS OF 1913, ETC.
 FOR THE DIRECTOR, DIVISION OF TAXATION

By *Warren Johnson* P.E. & L.S.
 LIC. # 15434 CHIEF ENGINEERING SECTION
 DATE MAR 20 1991 SERIAL NO. 7 1 5

SHEET NO. 64