

SHEET NO. 48

SHEET NO. 48

SHEET NO. 48

73

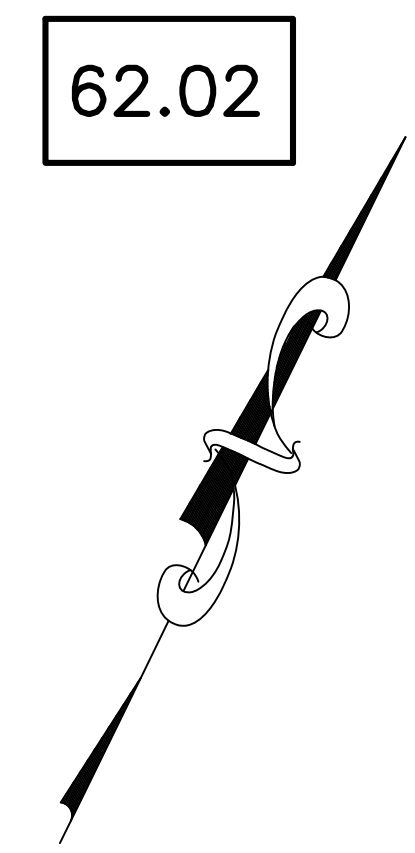
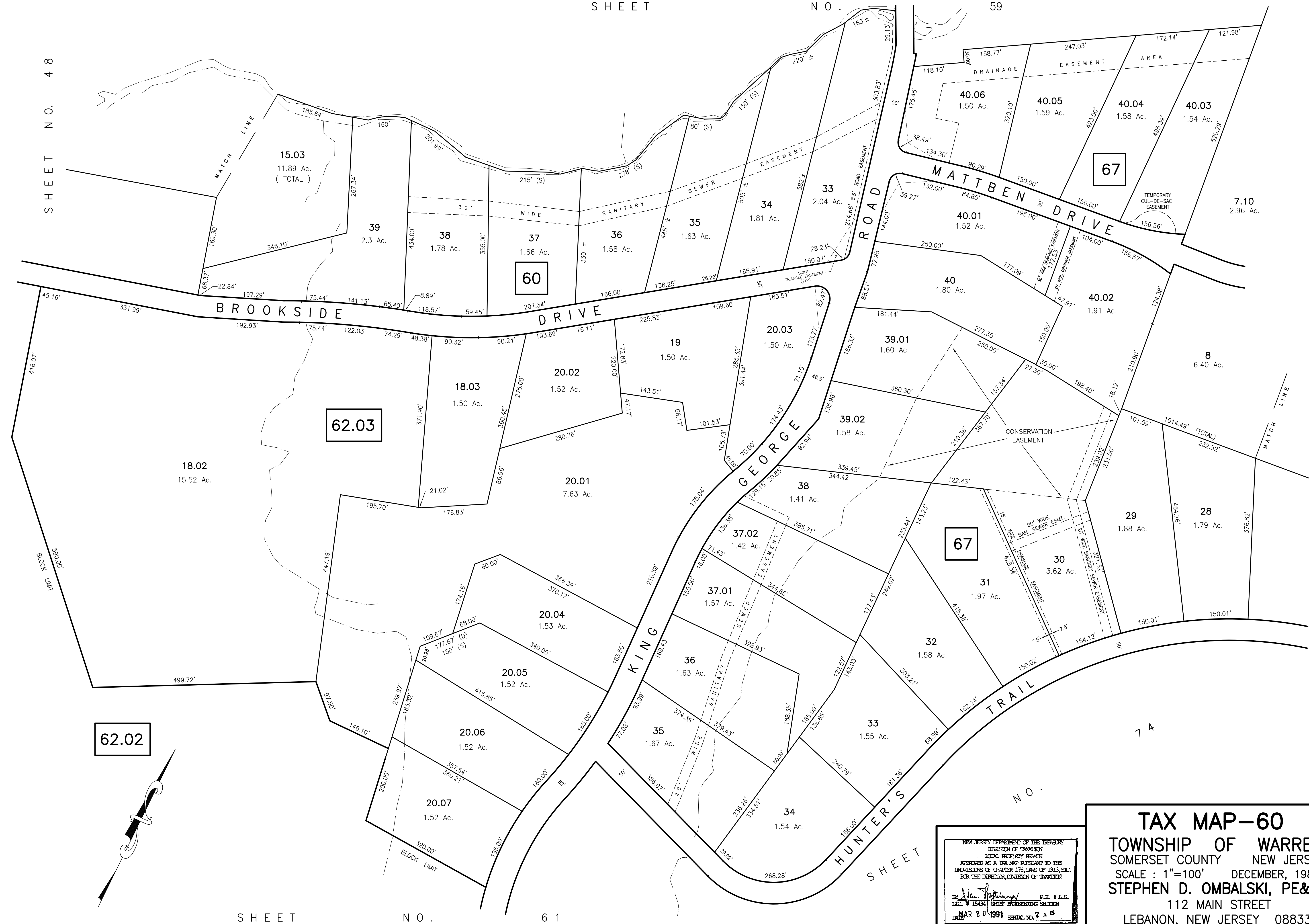
NO.

SHEET

74

NO.

SHEET



NEW JERSEY DEPARTMENT OF THE TREASURY  
 DIVISION OF TAXATION  
 LOCAL PROPERTY TAX  
 APPLICABLE AS A TAX MAP PURSUANT TO THE  
 PROVISIONS OF CHAPTER 175, LAWS OF 1913, ETC.,  
 FOR THE DIRECTOR, DIVISION OF TAXATION

By: *Stephen D. Ombalski* P.E. & L.S.  
 L.L.C. # 15434 CHIEF ENGINEERING SECTION  
 DATE: MAR 20 1991 SERIAL NO. 210

**TAX MAP-60**  
 TOWNSHIP OF WARREN  
 SOMERSET COUNTY NEW JERSEY  
 SCALE : 1"=100' DECEMBER, 1989  
**STEPHEN D. OMBALSKI, PE&LS**  
 112 MAIN STREET  
 LEBANON, NEW JERSEY 08833